

A journal of world insect systematics

INSECTA MUNDI

0831

Aphelocerus thomasi, a new species of checkered beetle
(Coleoptera: Cleridae: Clerinae) from Mexico

Jacques Rifkind

Research Associate, California State Collection of Arthropods, 3294 Meadowview Road
Sacramento, CA 95832 U.S.A.

Michael C. Thomas Festschrift Contribution
Date of issue: December 25, 2020

Center for Systematic Entomology, Inc., Gainesville, FL

Rifkind J. 2020. *Aphelocerus thomasi*, a new species of checkered beetle (Coleoptera: Cleridae: Clerinae) from Mexico. *Insecta Mundi* 0831: 1–3.

Published on December 25, 2020 by
Center for Systematic Entomology, Inc.
P.O. Box 141874
Gainesville, FL 32614-1874 USA
<http://centerforsystematicentomology.org/>

INSECTA MUNDI is a journal primarily devoted to insect systematics, but articles can be published on any non-marine arthropod. Topics considered for publication include systematics, taxonomy, nomenclature, checklists, faunal works, and natural history. *Insecta Mundi* will not consider works in the applied sciences (i.e. medical entomology, pest control research, etc.), and no longer publishes book reviews or editorials. *Insecta Mundi* publishes original research or discoveries in an inexpensive and timely manner, distributing them free via open access on the internet on the date of publication.

Insecta Mundi is referenced or abstracted by several sources, including the Zoological Record and CAB Abstracts. *Insecta Mundi* is published irregularly throughout the year, with completed manuscripts assigned an individual number. Manuscripts must be peer reviewed prior to submission, after which they are reviewed by the editorial board to ensure quality. One author of each submitted manuscript must be a current member of the Center for Systematic Entomology.

Guidelines and requirements for the preparation of manuscripts are available on the *Insecta Mundi* website at <http://centerforsystematicentomology.org/insectamundi/>

Chief Editor: David Plotkin, insectamundi@gmail.com
Assistant Editor: Paul E. Skelley, insectamundi@gmail.com
Layout Editor: Robert G. Forsyth
Editorial Board: Davide Dal Pos, Oliver Keller, M. J. Paulsen
Founding Editors: Ross H. Arnett, Jr., J. H. Frank, Virendra Gupta, John B. Heppner, Lionel A. Stange, Michael C. Thomas, Robert E. Woodruff
Review Editors: Listed on the *Insecta Mundi* webpage

Printed copies (ISSN 0749-6737) annually deposited in libraries:

CSIRO, Canberra, ACT, Australia	Florida Department of Agriculture and Consumer Services, Gainesville, FL, USA
Museu de Zoologia, São Paulo, Brazil	Field Museum of Natural History, Chicago, IL, USA
Agriculture and Agrifood Canada, Ottawa, ON, Canada	National Museum of Natural History, Smithsonian Institution, Washington, DC, USA
The Natural History Museum, London, UK	Zoological Institute of Russian Academy of Sciences, Saint- Petersburg, Russia
Muzeum i Instytut Zoologii PAN, Warsaw, Poland	
National Taiwan University, Taipei, Taiwan	
California Academy of Sciences, San Francisco, CA, USA	

Electronic copies (online ISSN 1942-1354, CDROM ISSN 1942-1362) in PDF format.

Printed CD or DVD mailed to all members at end of year. Archived digitally by Portico.
Florida Virtual Campus: <http://purl.fcla.edu/fcla/insectamundi>
University of Nebraska-Lincoln, Digital Commons: <http://digitalcommons.unl.edu/insectamundi/>
Goethe-Universität, Frankfurt am Main: <http://nbn-resolving.de/urn/resolver.pl?urn:nbn:de:hebis:30:3-135240>

Copyright held by the author(s). This is an open access article distributed under the terms of the Creative Commons, Attribution Non-Commercial License, which permits unrestricted non-commercial use, distribution, and reproduction in any medium, provided the original author(s) and source are credited. <http://creativecommons.org/licenses/by-nc/3.0/>

Aphelocerus thomasi, a new species of checkered beetle (Coleoptera: Cleridae: Clerinae) from Mexico

Jacques Rifkind

Research Associate, California State Collection of Arthropods, 3294 Meadowview Road
Sacramento, CA 95832 U.S.A.
E-mail: clerid@aol.com

Abstract. *Aphelocerus thomasi* Rifkind, **new species** (Coleoptera: Cleridae: Clerinae), is described from the state of San Luis Potosí, Mexico. This beetle is named for the late Michael C. Thomas, in recognition of his lifetime of contributions to the study of Coleoptera.

Key words. Clerid fauna, taxonomy, endemism.

ZooBank registration. urn:lsid:zoobank.org:pub:CD47CC7D-0D74-42CA-902B-72889B0E8528

Introduction

Aphelocerus Kirsch (Coleoptera: Cleridae) is a moderately speciose genus (approx. 66 species) of predaceous beetle, broadly distributed across Mexico, Central America, and South America, that was recently revised by Opitz (2005). The Mexican *Aphelocerus* fauna includes approximately 25 described species (Opitz 2005), and several undescribed species are known. Endemism appears to be common, particularly in the tropical and subtropical highlands. Species in Mexico are adapted to a wide variety of habitats, including tropical deciduous forest, evergreen forest, pine–oak, and pine forest. This paper describes and illustrates a new species of Mexican *Aphelocerus*.

Materials and Methods

Depositories. The holotype is deposited in the California State Collection of Arthropods, Sacramento, California, U.S.A. (CSCA).

Images. Macro photographs were taken with an Olympus TG-5 camera fitted with an Olympus LED Light Guide (LG-1) attachment. Images were captured and processed using the camera's onboard macro photo stacking software. Measurements were established using the ocular grid in a Zeiss stereomicroscope and a millimeter scale.

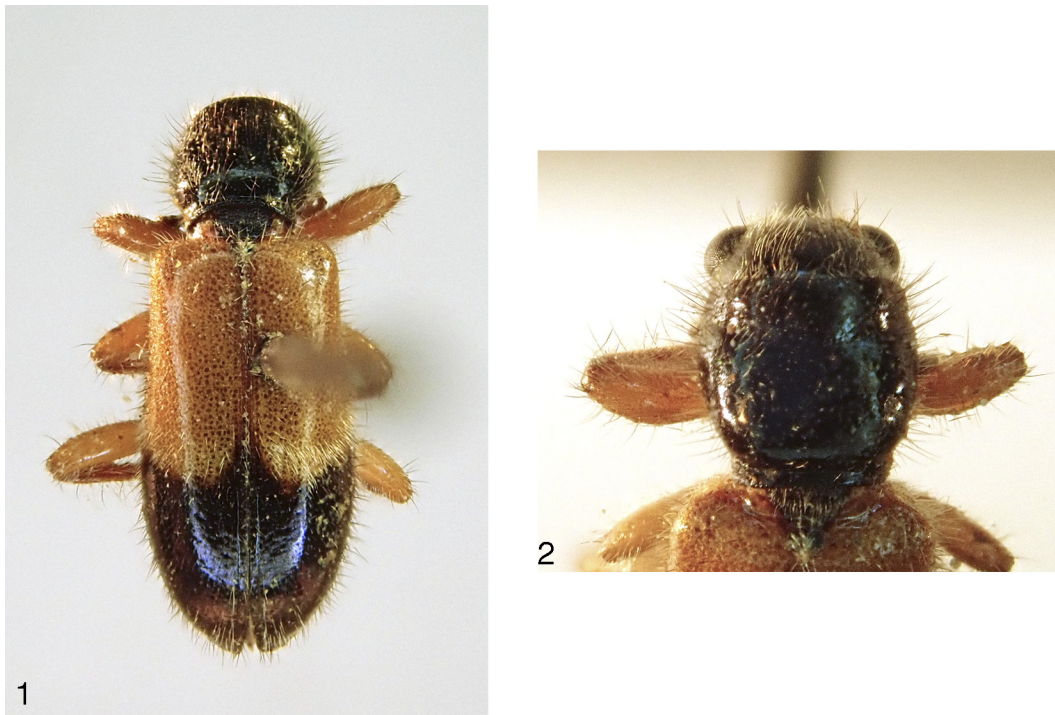
Results

Aphelocerus thomasi Rifkind, new species

(Fig. 1–2)

Specimen examined. Holotype male: México, San Luis Potosí, Huichihuayán, VI-21-1962, J. M. Campbell (CSCA).

Description. Length: 6.0 mm. Color: orange testaceous; head, prothorax, abdomen, black; posterior $\frac{1}{3}$ of elytra piceous; mouthparts testaceous, antennae reddish brown; piceous elytral markings arcuately emarginate on anterior border, slightly produced anteriorly at suture (Fig. 1). **Head:** shining, shallowly, finely punctate; surface inconspicuously set with fine, short, silvery, adpressed setae, and a few longer, more robust, black setae; antennae moderate in length; club composed of distal 4 antennomeres, gradually enlarged. **Pronotum:** slightly broader than long, subflattened on disk above; anterior depression distinct; surface shining, moderately densely but inconspicuously vested with fine, medium length, reclinate silvery setae, intermixed with longer, more robust suberect black setae (Fig. 2). Scutellum small, densely covered with white setae. **Elytra:** elongate (ratio of length to width 13:7); umbones distinct; sides subparallel, arcuately, but rather gradually convergent posteriorly to



Figures 1–2. *Aphelocerus thomasi*, holotype. 1) Habitus. 2) Head and prothorax.

separately rounded, dehiscent apices; dorsum slightly subflattened; integument shining, finely, sparsely, shallowly punctate, anterior $\frac{2}{3}$ sparsely and inconspicuously set with short erect pale setae and fewer somewhat longer and more robust erect tawny setae; posterior margin of testaceous area with an irregular transverse band formed by a concentration of moderately long reclinate posteriorly oriented white setae most conspicuous internally at suture; elytral posterior $\frac{1}{3}$ rather densely covered with suberect and longer, erect black setae. **Metasternum:** shining, moderately densely clothed with medium length pale setae. **Abdomen:** ventrites shining, coarsely, shallowly, punctate and moderately densely clothed with fine, pale setae, ventrite 5 with hind margin broadly, feebly emarginate; ventrite 6 smaller, hind margin broadly, feebly emarginate; tergite 6 obliquely rounded laterally, subtruncate apically, somewhat excavate ventrally, surpassing ventrite 6 posteriorly.

Variation. Only the holotype is known.

Etymology. I dedicate this species to the late Michael C. Thomas, in recognition of his many contributions to the systematics of Coleoptera.

Distribution. The new species is known from San Luis Potosí, on the Atlantic versant of north central Mexico. The holotype was collected in June.

Diagnosis. *Aphelocerus thomasi* can be distinguished from congeners by a unique combination of color pattern and elytral shape. Most *Aphelocerus* species are uniformly black. Of the few bicolourous species, *A. thomasi* could only be confused with the similarly sized *A. delicatulus* (Barr), but the latter has the head and prothorax partially testaceous, the anterior $\frac{2}{3}$ of the elytra with a broad longitudinal dark band at the suture, and the elytral apices distinctly more rounded than the former (Fig. 3). Furthermore, *A. thomasi* is known from a specimen collected in June on Mexico's Atlantic side, whereas *A. delicatulus* has only been recorded from the Pacific versant (in the states of Sinaloa, Jalisco, Colima, Morelos, Puebla and Oaxaca), with all collections made from late August through October. The two species therefore appear to be both allopatric and phenologically isolated.



Figure 3. *Aphelocerus delicatulus*, habitus.

Acknowledgments

I thank Weston Opitz for giving me the type specimen and Patricia Gum for preparing the illustrations. Henry Hespeneide and John M. Leavengood, Jr. kindly reviewed the manuscript: I appreciate their time and efforts.

Literature Cited

Opitz W. 2005. Classification, natural history and evolution of the genus *Aphelocerus* Kirsch (Coleoptera: Cleridae: Clerinae). *Bulletin of the American Museum of Natural History* 293: 1–128.

Received November 19, 2020; accepted November 24, 2020.

Review editor Paul E. Skelley.

