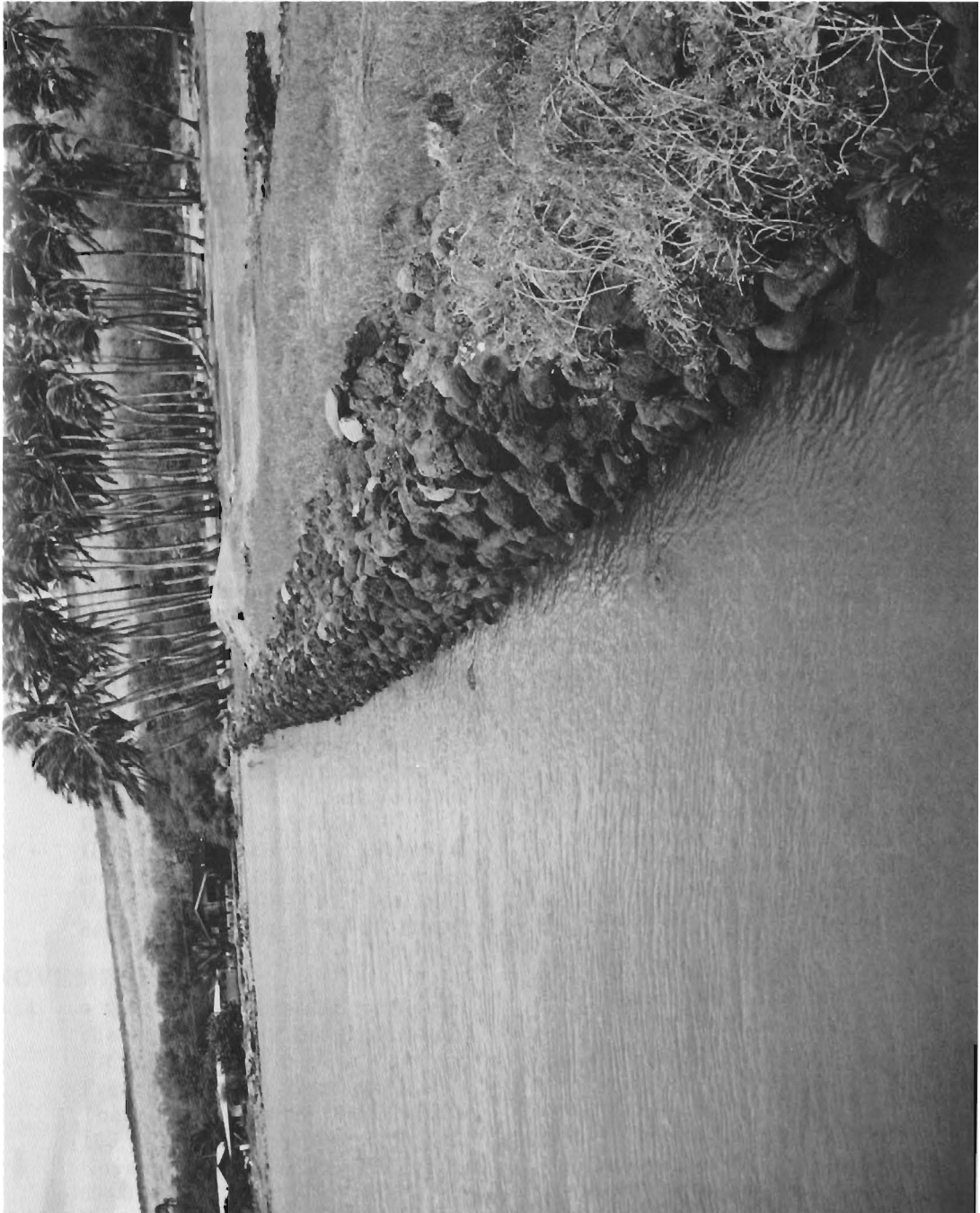


---

**COASTAL PHOTOGRAPH BY H. JESSE WALKER**

---



**PHOTO 155.** Typical wall used by Hawaiians in the construction of “loko” (fishponds) on the island of Molokai. (Photo: H. Jesse Walker, Department of Geography and Anthropology, Louisiana State University, Baton Rouge, LA 70803).