
COASTAL PHOTOGRAPH BY ANDREW MORANG

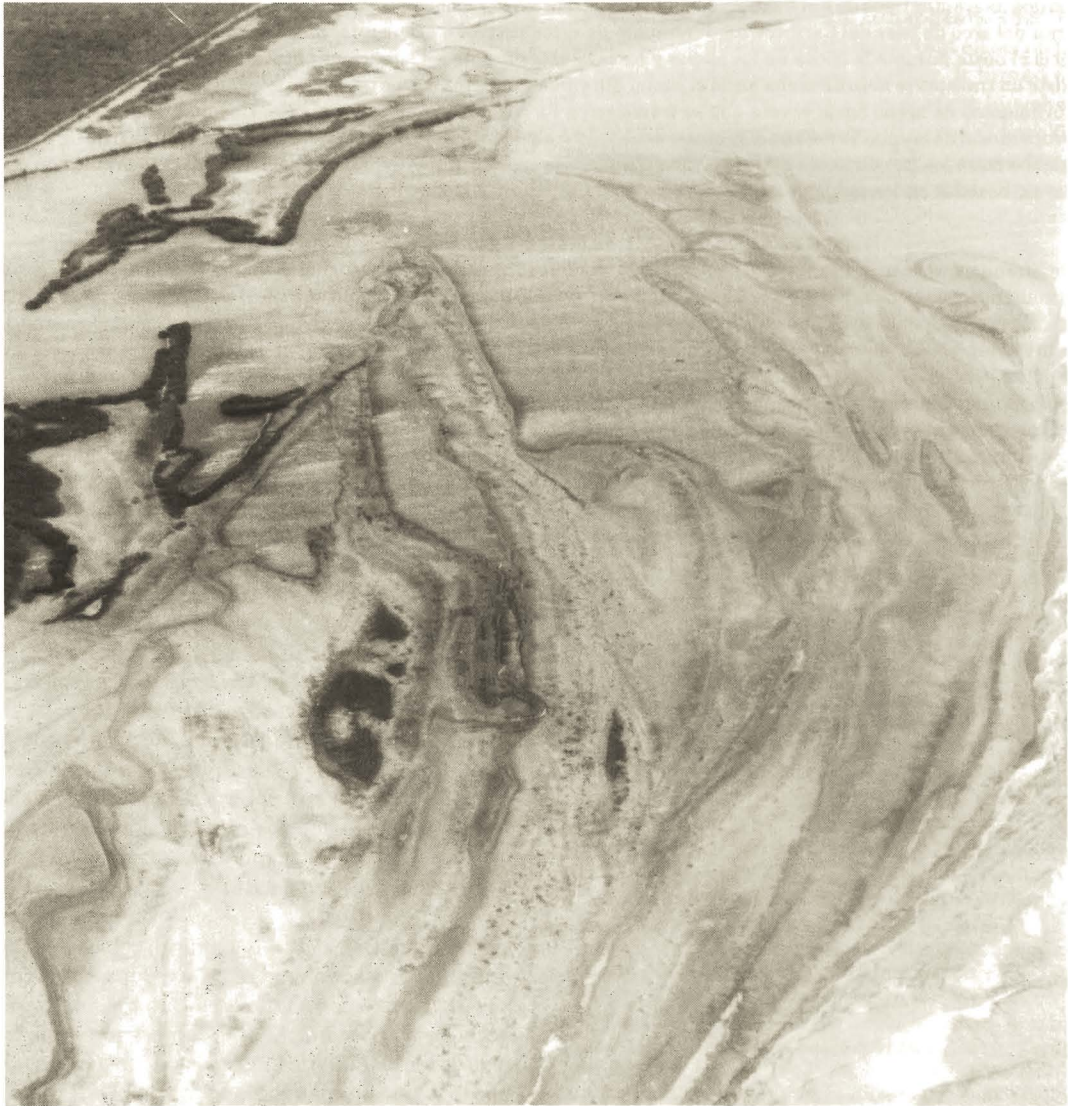


PHOTO 41. Aerial photograph of beaches along the Caribbean coastline of Colombia, between Santa Maria and Cienaga. Waves approaching from the north break at a steep angle along this northeast-southeast trending shoreline. The resulting strong longshore currents carry sand towards the southwest and eventually produce fragile, arcuate sand spits. These spits will continue to grow and may eventually block the lagoon in the upper left of the scene. The lagoon will become a salt pond and, later, a fresh water marsh, and will eventually fill with sediments and decaying plant material. View looking southwest, taken from about 500 meters altitude. Widest part of the beach is about one half kilometer from surf to trees. Date: February, 1981. (Photograph by Andrew Morang, U.S. Army Engineer Waterways Experiment Station, Coastal Engineering Research Center, Vicksburg, MS 39180)