



# Maps of Charlotte County General Permit Trafficshed Channels and Secondary Channels



**Robert A. Swett  
David A. Fann  
Elizabeth Staugler**

**SGEF-209  
July 2014**



This publication was supported by the National Sea Grant College Program of the U.S. Department of Commerce's National Oceanic and Atmospheric Administration (NOAA), Grant No. NA14OAR4170108. The views expressed are those of the authors and do not necessarily reflect the view of these organizations. Additional copies are available by contacting Florida Sea Grant, University of Florida, PO Box 110409, Gainesville, FL, 32611-0409, (352) 392.2801, [www.flseagrant.org](http://www.flseagrant.org).

# **Maps of Charlotte County General Permit Trafficshed Channels and Secondary Channels**

**Robert A. Swett  
David A. Fann  
Elizabeth Staugler**

**SGEF-209  
July 2014**

## Foreword

This document is a collection of maps, prepared by Florida Sea Grant, that depict channels included in the Charlotte County General Permit (GP)<sup>1</sup>. Each map shows either (a) channel segments within a GP trafficshed<sup>2</sup> or (b) segments in a GP secondary channel system (contains channels that route vessels from one or more trafficsheds to deep, open water). West Coast Inland Navigation District (WCIND) policy requires that navigational safety factors and/or the provision of access to public facilities determine eligibility of channel segments for inclusion in the GP.

Channel segments are symbolized by line thickness to highlight those for which dredging is anticipated under the GP given waterway depths measured during the field survey<sup>3</sup>. The symbology is determined by subtracting the measured MLLW<sup>4</sup> depth of each channel segment from the GP depth (determined for the entire trafficshed or secondary channel system). If the difference is greater than zero, the status “GP Dredging Anticipated” is assigned. Otherwise, the status is “GP Dredging Not Anticipated.” Each map includes summary statistics of total GP channel length, total length of channel segments for which GP dredging is anticipated, and GP dredge depth.

The channel segments are waterway centerlines constructed from depths measured for the Charlotte County Regional Waterway Management System project (2013)<sup>5</sup>.

---

<sup>1</sup> Rule 62-330.411 General Permit for Public Navigation Channel and Canal Infrastructure by the West Coast Inland Navigation District within Charlotte County.  
<https://www.flrules.org/gateway/ChapterHome.asp?Chapter=62-330>.

<sup>2</sup> The term trafficshed is used to define an area that contains a concentration of boats that use a common channel, exclusive to the trafficshed, to gain access to secondary access channels and, ultimately, to deep, open water.

<sup>3</sup> Select channel segments that are associated with Bass Inlet Secondary Channel (page 6), Beeney/Bangsburg/Severin Waterway (page 7), Dover Canal (page 12), and Santa Clara Canal (page 26) currently have adequate navigability, but are candidates for the GP based on the county maintenance program history and anticipated future maintenance needs.

<sup>4</sup> Mean Lower Low Water tidal datum.

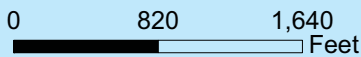
<sup>5</sup> Swett, R.A., D.A. Fann, and B. Staugler. 2012. Regional Waterway Management System for Charlotte County, FL. Florida Sea Grant Technical Paper 181. Gainesville, FL Florida Sea Grant College Program.

## **Table of Figures**

### **Trafficshed and secondary channel maps**

- |  |   |
|--|---|
| 1. Ackerman Waterway System            | 15. Gottfried Creek-Englewood Secondary Channel |
| 2. Ainger Creek                        | 16. Little Alligator Creek                      |
| 3. Alligator Bay Secondary Channel     | 17. Myakka River Secondary Channel              |
| 4. Balboa Canal                        | 18. Oyster Creek                                |
| 5. Baldwin/Olman/Severin Road Waterway | 19. Peace Island-East                           |
| 6. Bass Inlet Secondary Channel        | 20. Punta Gorda Isles-Tarpon/Pompano Inlet      |
| 7. Beeney/Bangsburg/Severin Waterway   | 21. Punta Gorda Isles-Bass Inlet                |
| 8. Broad Creek                         | 22. Punta Gorda Marina                          |
| 9. Canal Waterway                      | 23. San Marino Canal                            |
| 10. Countryman Waterway System         | 24. San Salvador Canal                          |
| 11. DeSoto Canal                       | 25. Santa Barbara Canal                         |
| 12. Dover Canal                        | 26. Santa Clara Canal                           |
| 13. East Spring Lake Waterway          | 27. Whidden Bay Secondary Channel               |
| 14. El Jobean                          |   |

# Ackerman Waterway System



Only those channels belonging to the trafficked or secondary channel system are visible in the map.

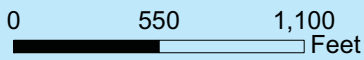
### Channel Restriction Category

- GP Dredging Not Anticipated
- GP Dredging Anticipated

Total GP channel length: 6,646 ft  
Anticipated dredge length: 4,459 ft  
Design Dredge Depth: 5 ft



# Ainger Creek



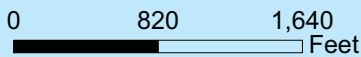
Only those channels belonging to the trafficked or secondary channel system are visible in the map.

### Channel Restriction Category

- GP Dredging Not Anticipated
- GP Dredging Anticipated

Total GP channel length: 5,927 ft  
Anticipated dredge length: 3,486 ft  
Design Dredge Depth: 3.5 ft

# Alligator Bay Secondary Channel



Only those channels belonging to the trafficked or secondary channel system are visible in the map.

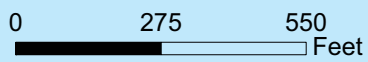
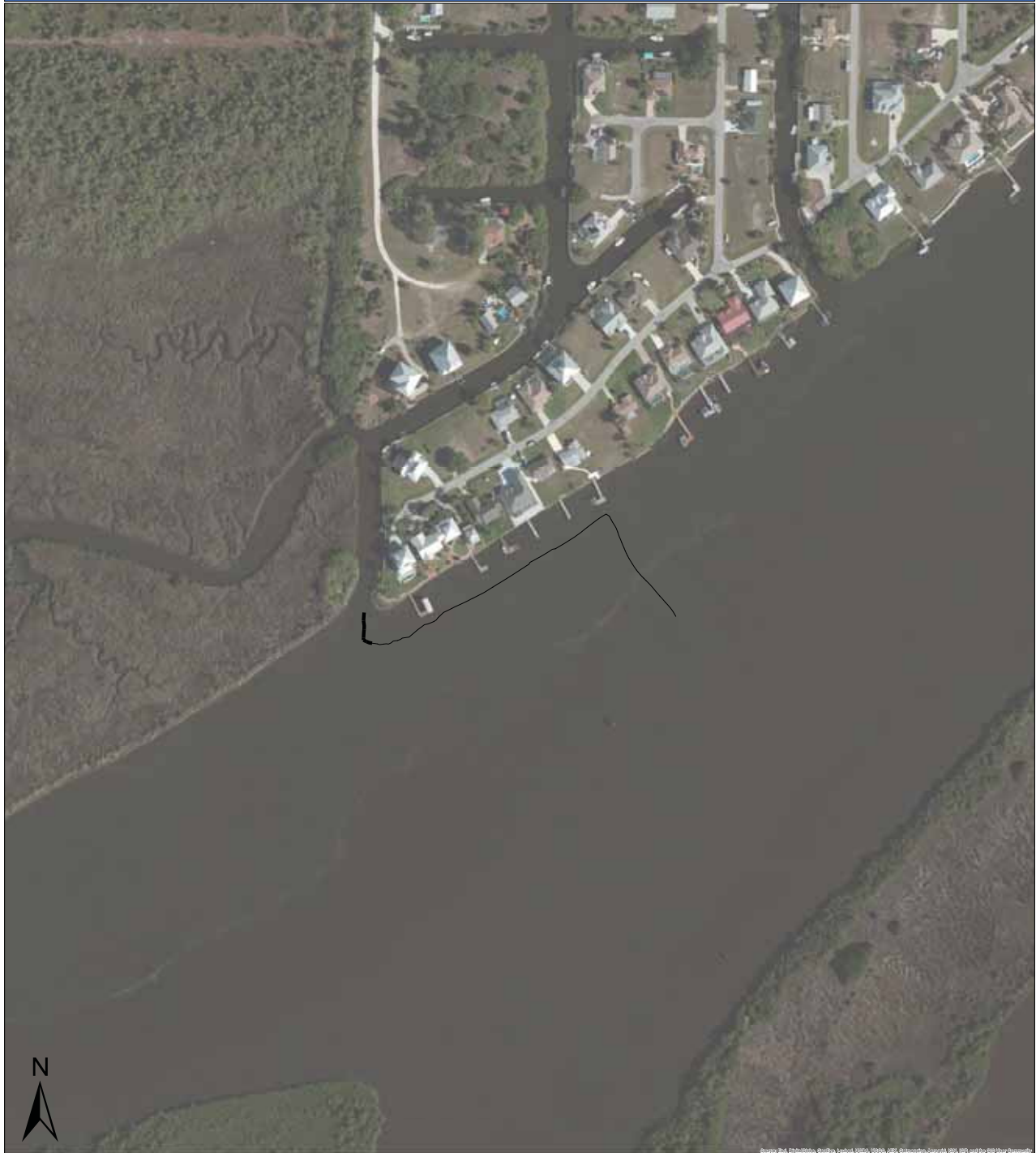
### Channel Restriction Category

- GP Dredging Not Anticipated
- GP Dredging Anticipated

Total GP channel length: 7,831 ft  
Anticipated dredge length: 4,666 ft  
Design Dredge Depth: 4.5 ft



# Balboa Canal



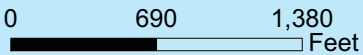
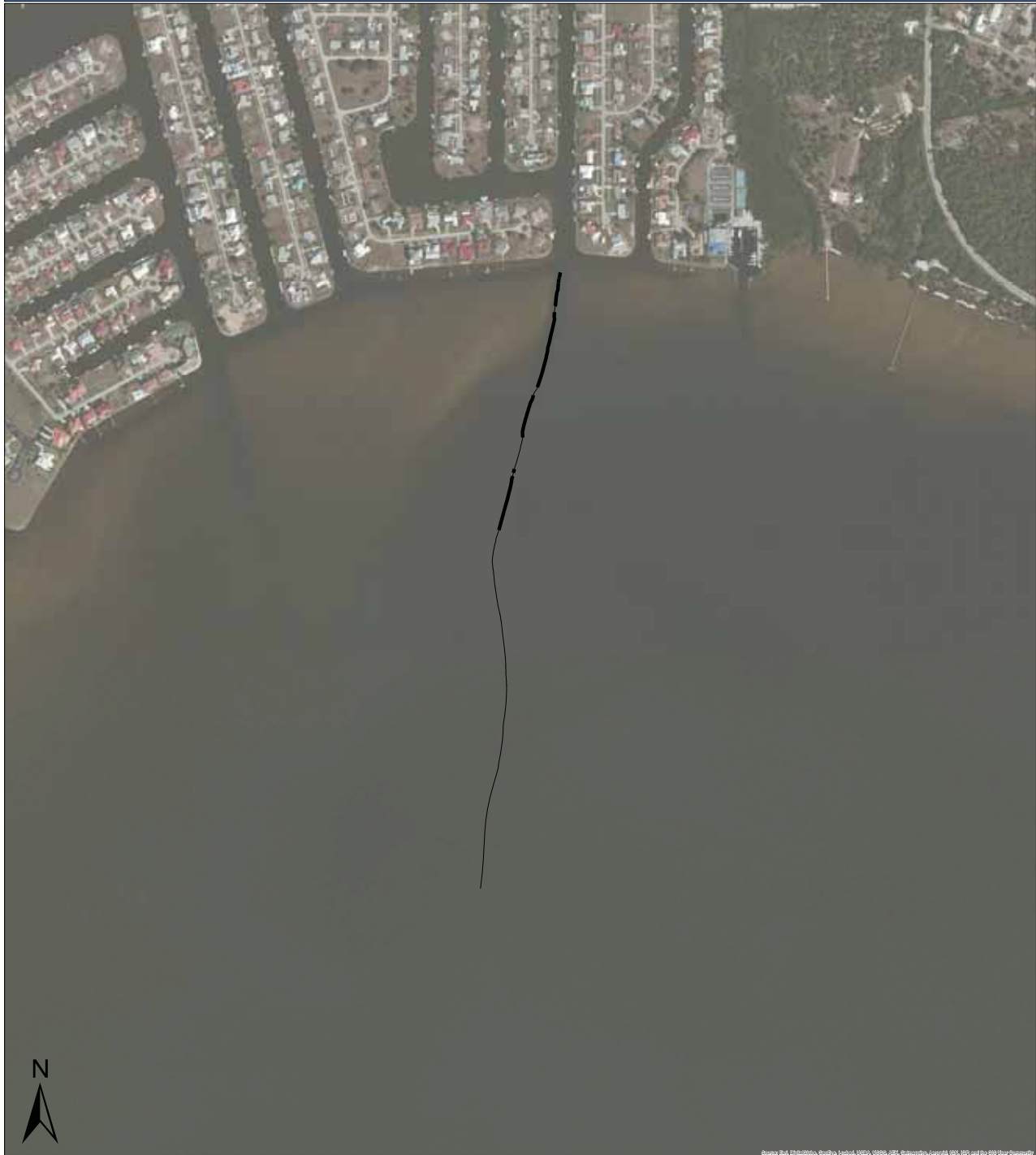
Only those channels belonging to the trafficked or secondary channel system are visible in the map.

### Channel Restriction Category

- GP Dredging Not Anticipated
- GP Dredging Anticipated

Total GP channel length: 1,017 ft  
Anticipated dredge length: 86 ft  
Design Dredge Depth: 4.5 ft

# Baldwin/Olman/Severin Road Waterway



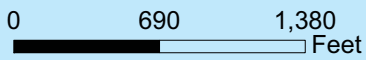
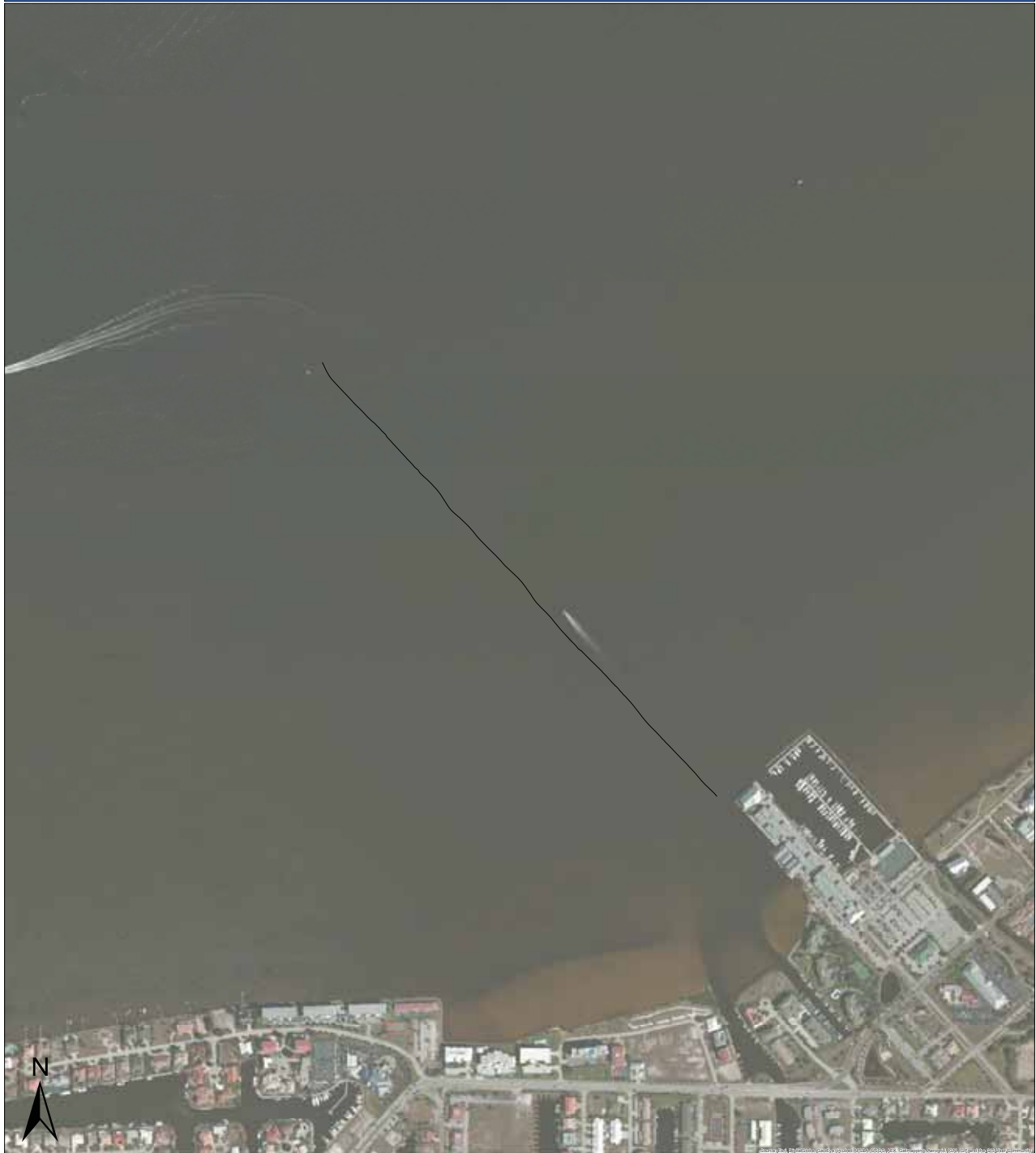
Only those channels belonging to the trafficked or secondary channel system are visible in the map.

### Channel Restriction Category

- GP Dredging Not Anticipated
- GP Dredging Anticipated

Total GP channel length: 3,670 ft  
Anticipated dredge length: 1,259 ft  
Design Dredge Depth: 4.5 ft

# Bass Inlet Secondary Channel



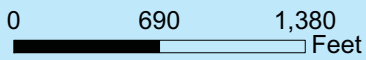
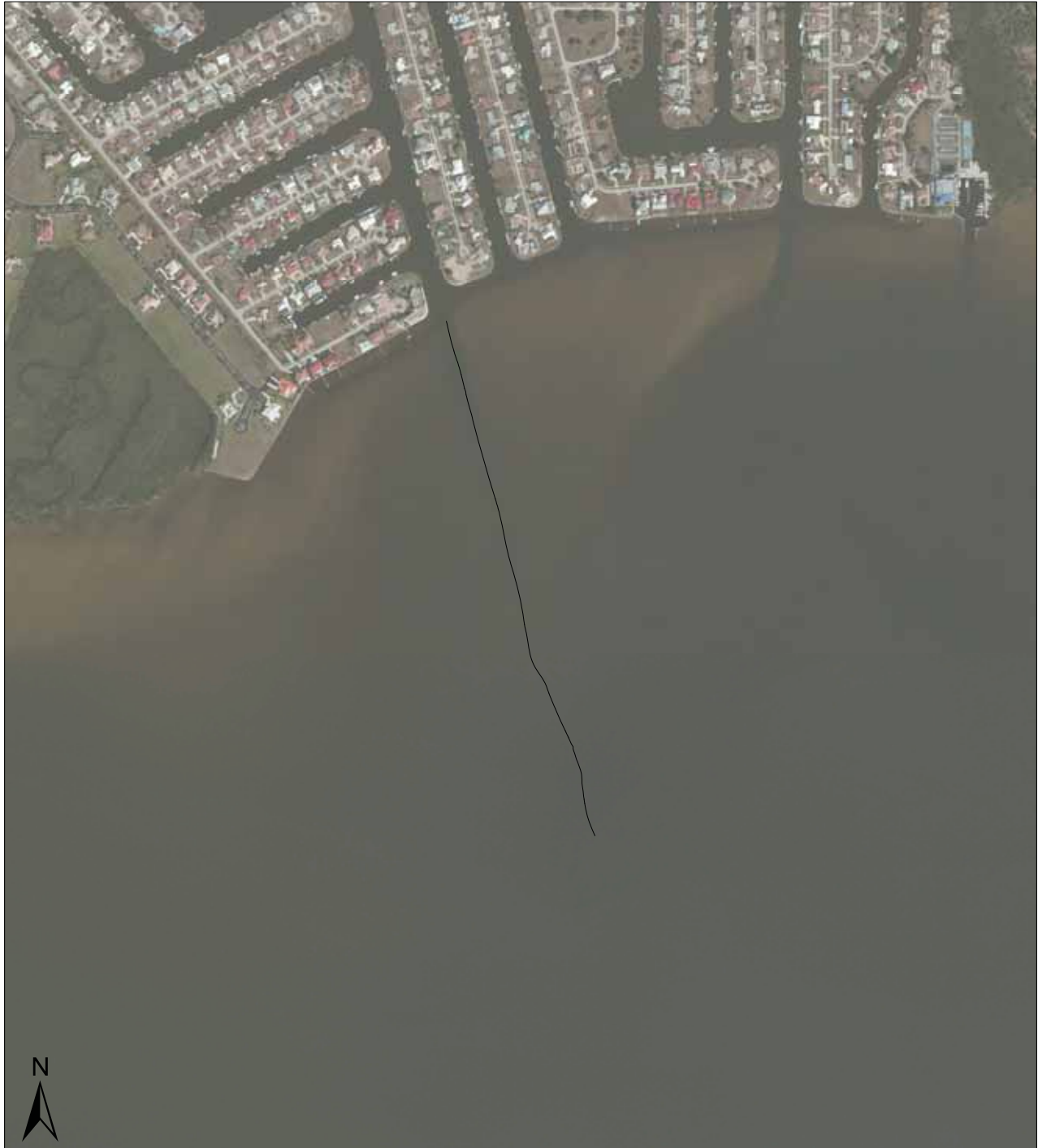
Only those channels belonging to the trafficked or secondary channel system are visible in the map.

### Channel Restriction Category

- GP Dredging Not Anticipated
- GP Dredging Anticipated

Total GP channel length: 3,435 ft  
Anticipated dredge length: 0 ft  
Design Dredge Depth: 4.5 ft

# Beeney/Bangsburg/Severin Waterway



Only those channels belonging to the trafficked or secondary channel system are visible in the map.

### Channel Restriction Category

- GP Dredging Not Anticipated
- GP Dredging Anticipated

Total GP channel length: 3,141 ft  
Anticipated dredge length: 0 ft  
Design Dredge Depth: 3.5 ft



# Broad Creek



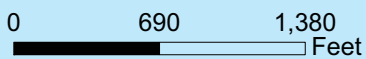
Only those channels belonging to the trafficked or secondary channel system are visible in the map.

### Channel Restriction Category

- GP Dredging Not Anticipated
- GP Dredging Anticipated

Total GP channel length: 726 ft  
Anticipated dredge length: 726 ft  
Design Dredge Depth: 3.5 ft

# Canal Waterway



Only those channels belonging to the trafficked or secondary channel system are visible in the map.

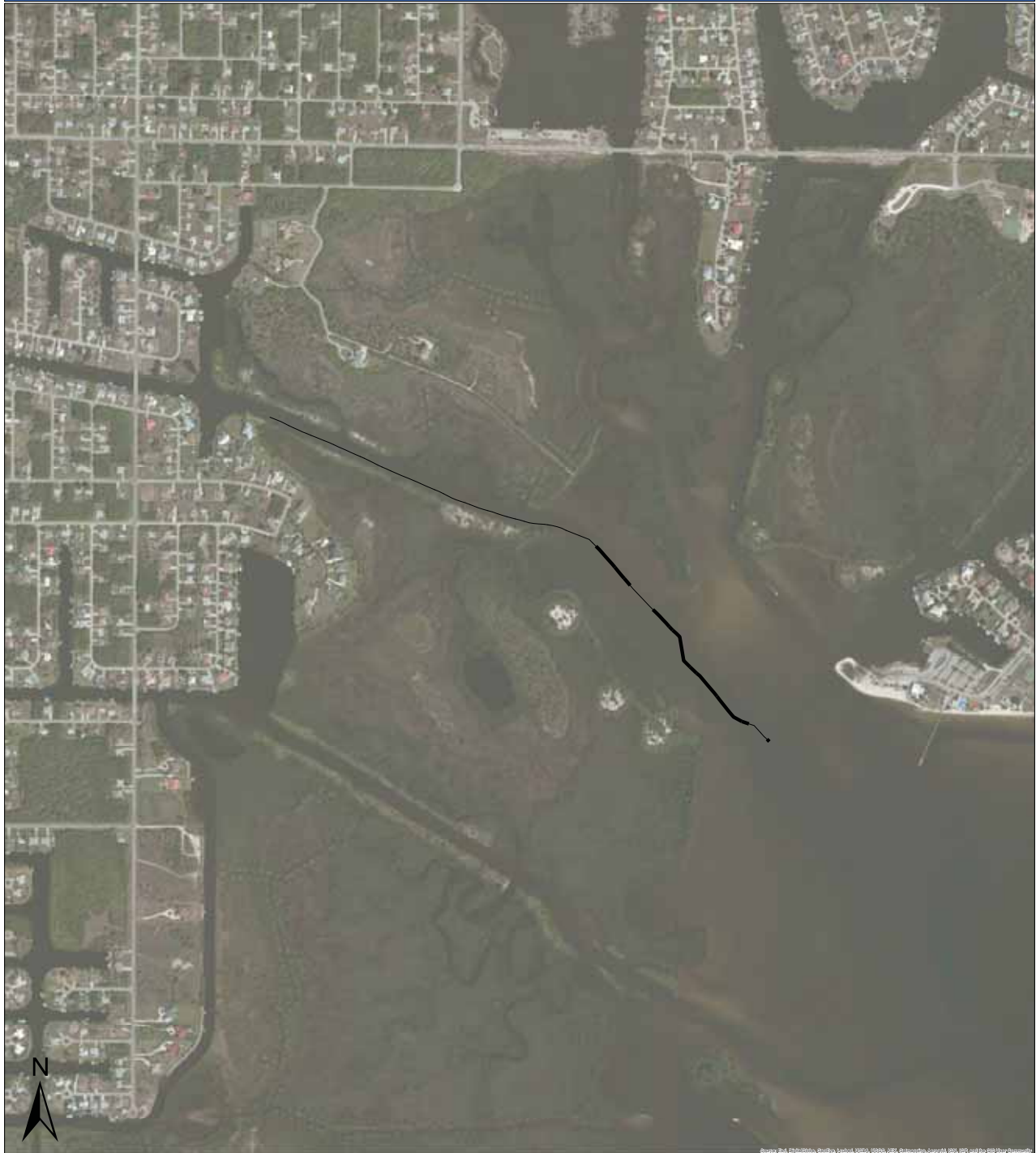
### Channel Restriction Category

- GP Dredging Not Anticipated
- GP Dredging Anticipated

Total GP channel length: 3,828 ft  
Anticipated dredge length: 2,854 ft  
Design Dredge Depth: 4.5 ft



# Countryman Waterway System



0 890 1,780 Feet

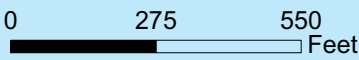
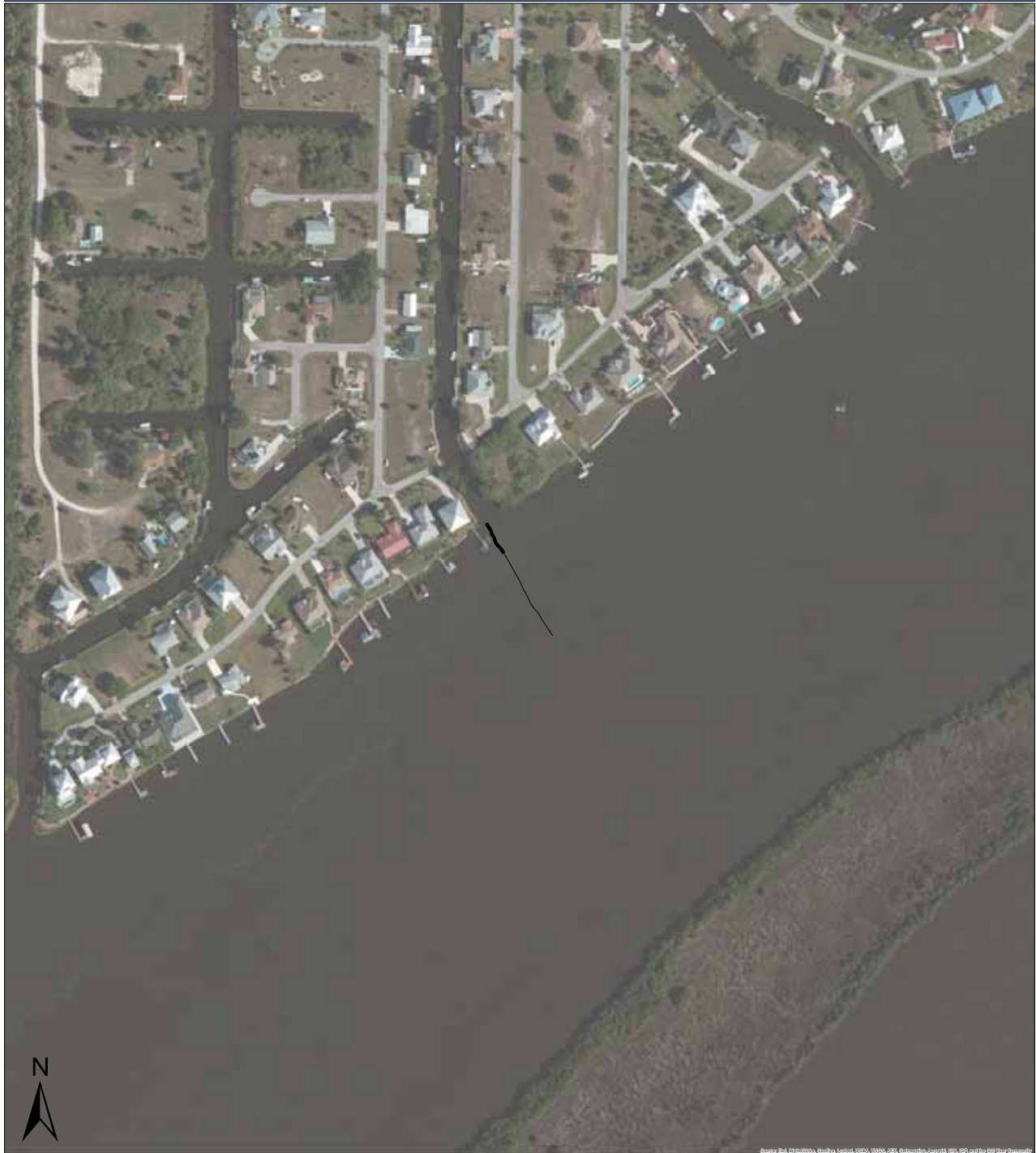
Only those channels belonging to the trafficked or secondary channel system are visible in the map.

### Channel Restriction Category

- GP Dredging Not Anticipated
- GP Dredging Anticipated

Total GP channel length: 4,709 ft  
 Anticipated dredge length: 1,595 ft  
 Design Dredge Depth: 4 ft

# DeSoto Canal



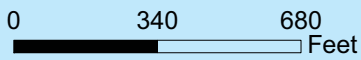
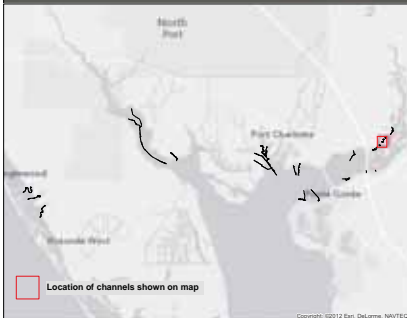
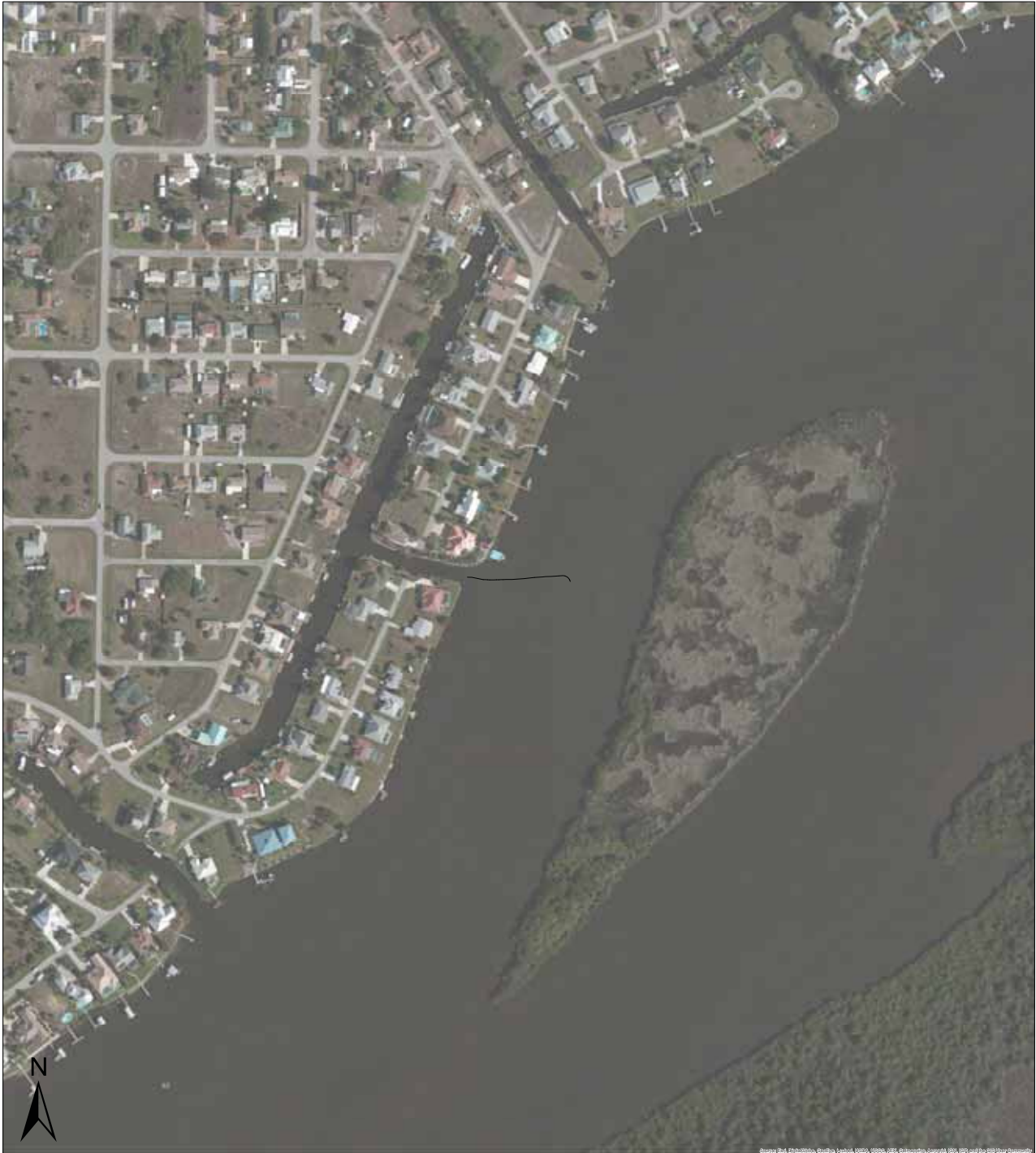
Only those channels belonging to the trafficked or secondary channel system are visible in the map.

### Channel Restriction Category

- GP Dredging Not Anticipated
- GP Dredging Anticipated

Total GP channel length: 307 ft  
Anticipated dredge length: 83 ft  
Design Dredge Depth: 4.5 ft

# Dover Canal



Only those channels belonging to the trafficked or secondary channel system are visible in the map.

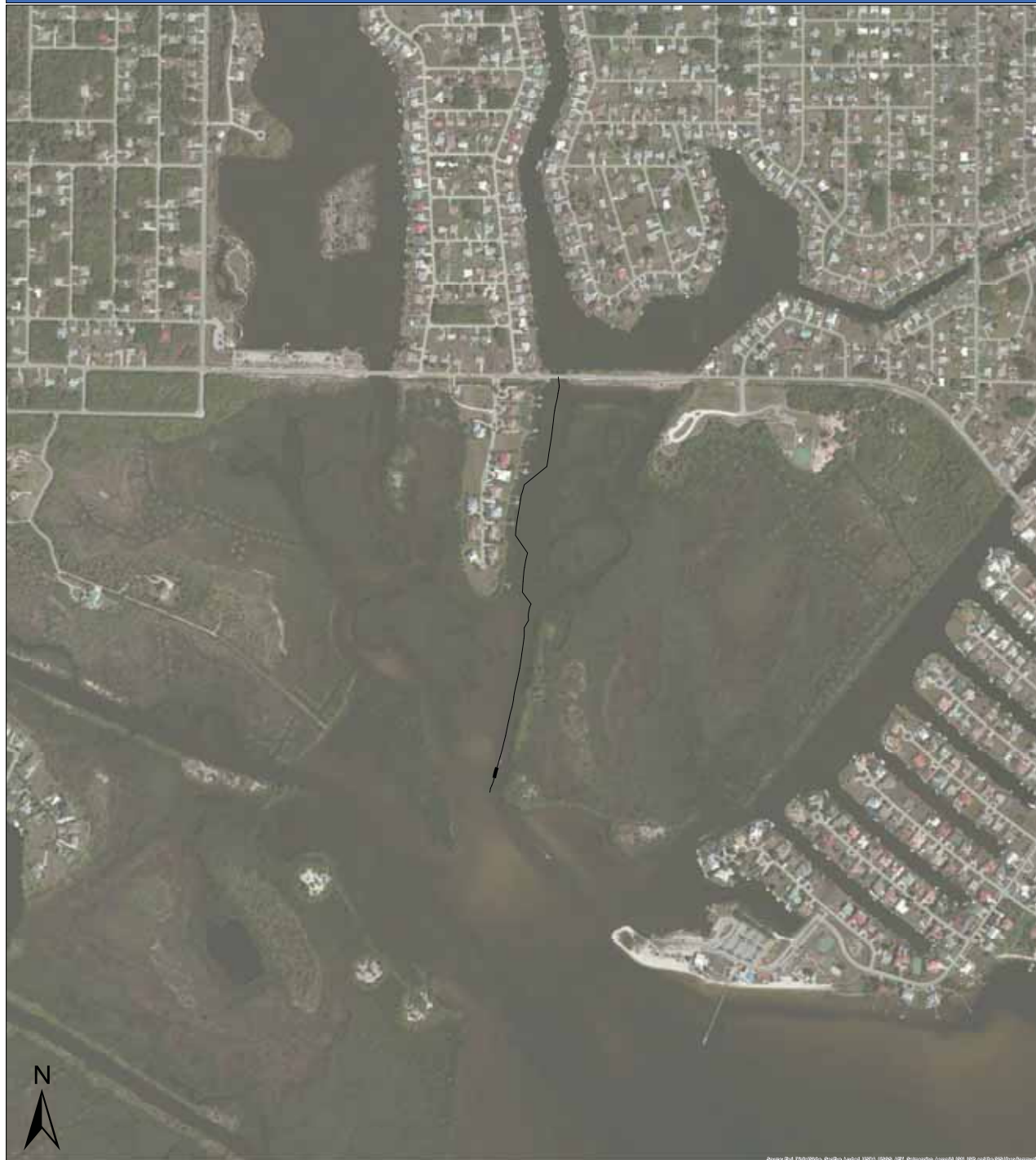
### Channel Restriction Category

- GP Dredging Not Anticipated
- GP Dredging Anticipated

Total GP channel length: 309 ft  
Anticipated dredge length: 0 ft  
Design Dredge Depth: 4.5 ft



# East Spring Lake Waterway



0 820 1,640 Feet

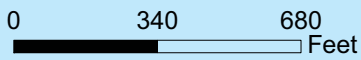
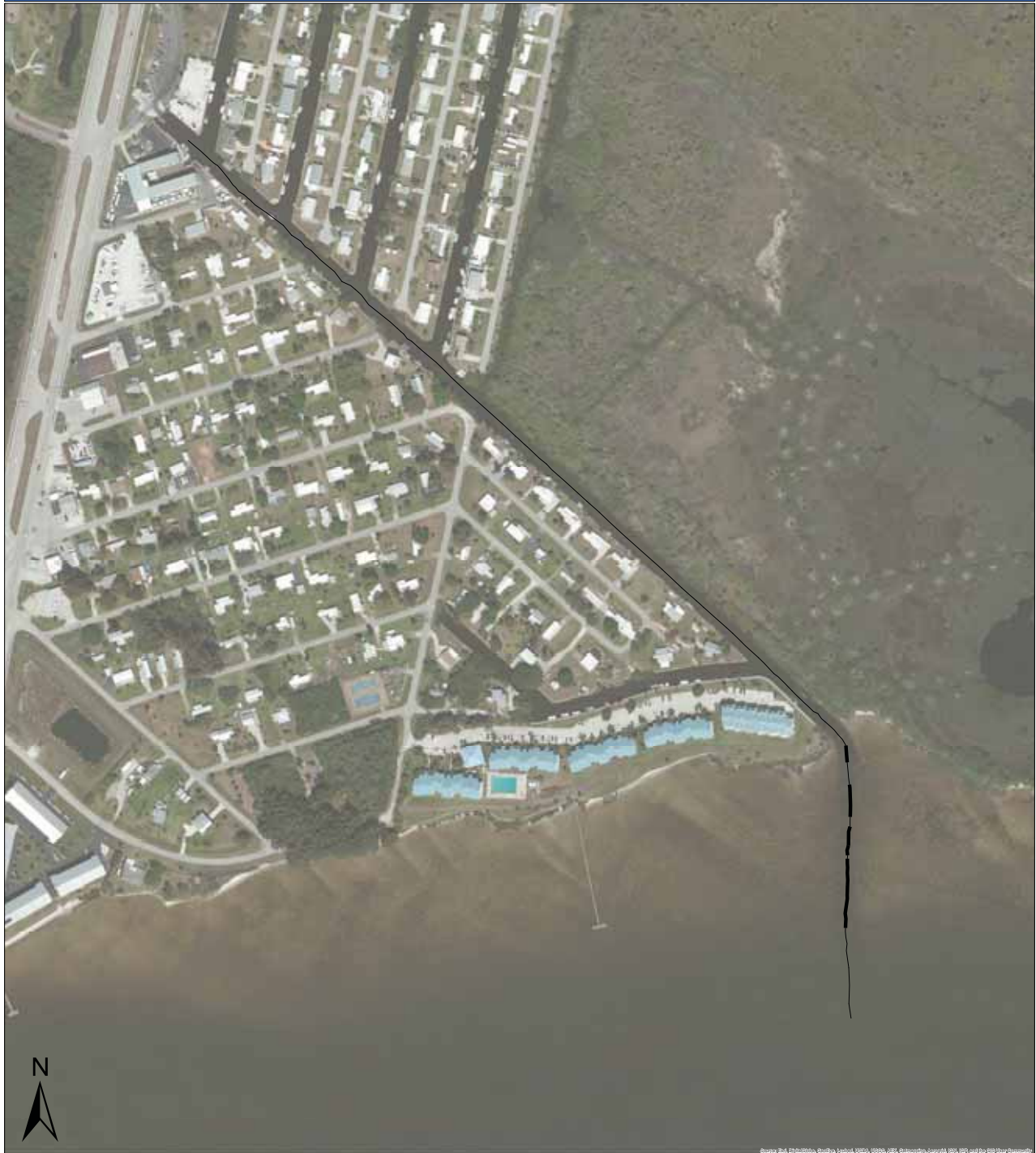
Only those channels belonging to the trafficked or secondary channel system are visible in the map.

### Channel Restriction Category

- GP Dredging Not Anticipated
- GP Dredging Anticipated

Total GP channel length: 3,069 ft  
Anticipated dredge length: 75 ft  
Design Dredge Depth: 4.5 ft

# El Jobean



Only those channels belonging to the trafficked or secondary channel system are visible in the map.

### Channel Restriction Category

- GP Dredging Not Anticipated
- GP Dredging Anticipated

Total GP channel length: 3,420 ft  
Anticipated dredge length: 432 ft  
Design Dredge Depth: 4.5 ft

# Gottfried Creek-Englewood Secondary Channel



0 480 960 Feet

Only those channels belonging to the trafficked or secondary channel system are visible in the map.

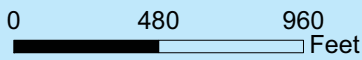
**Channel Restriction Category**

- GP Dredging Not Anticipated
- GP Dredging Anticipated

Total GP channel length: 6,767 ft  
 Anticipated dredge length: 1,001 ft  
 Design Dredge Depth: 3.5 ft



# Little Alligator Creek



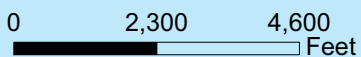
Only those channels belonging to the trafficked or secondary channel system are visible in the map.

### Channel Restriction Category

- GP Dredging Not Anticipated
- GP Dredging Anticipated

Total GP channel length: 5,084 ft  
Anticipated dredge length: 2,043 ft  
Design Dredge Depth: 4.5 ft

# Myakka River Secondary Channel



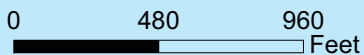
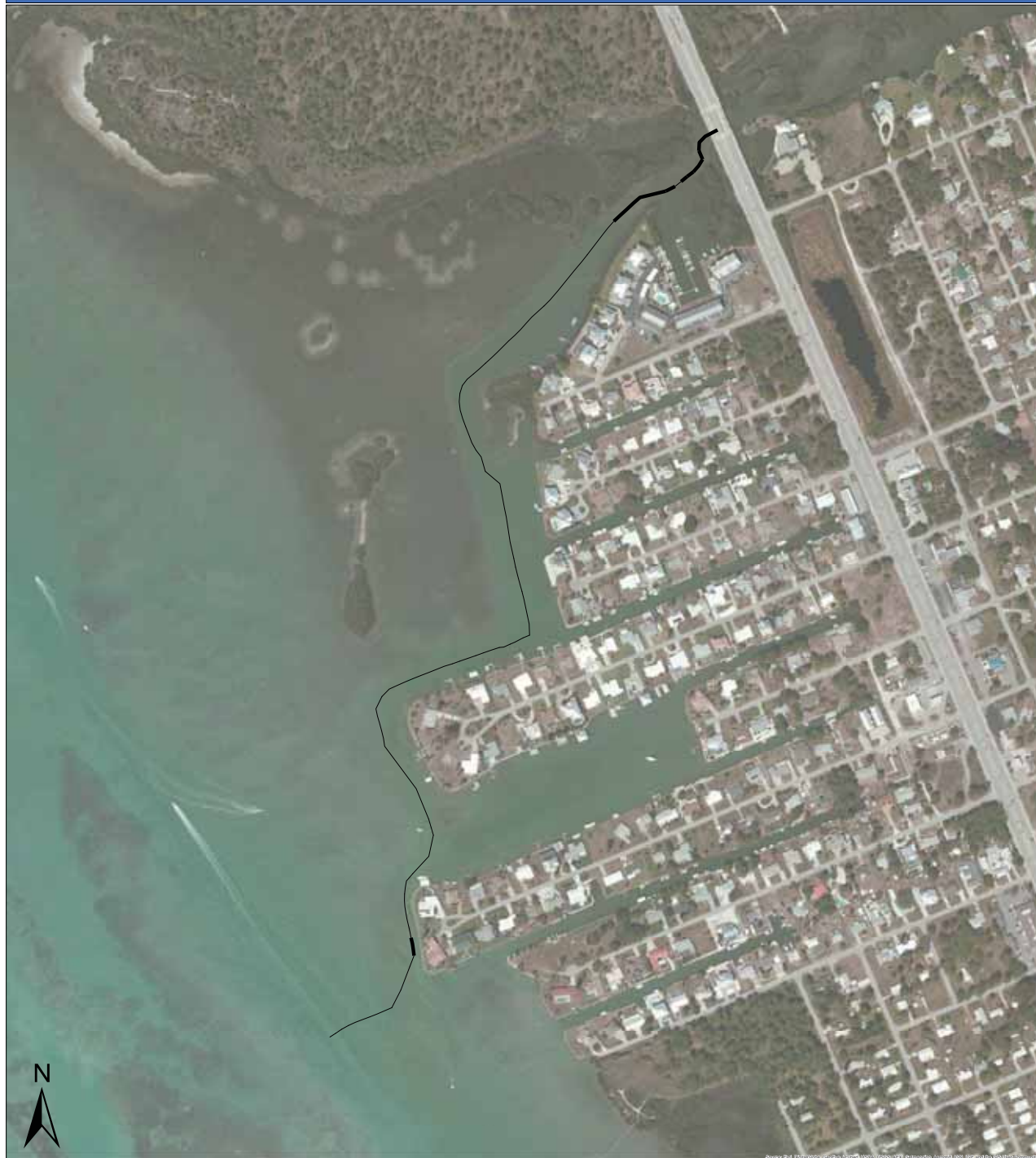
Only those channels belonging to the trafficked or secondary channel system are visible in the map.

### Channel Restriction Category

- GP Dredging Not Anticipated
- GP Dredging Anticipated

Total GP channel length: 28,205 ft  
Anticipated dredge length: 7,275 ft  
Design Dredge Depth: 3.5 ft

# Oyster Creek



Only those channels belonging to the trafficked or secondary channel system are visible in the map.

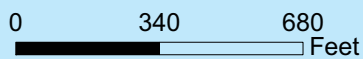
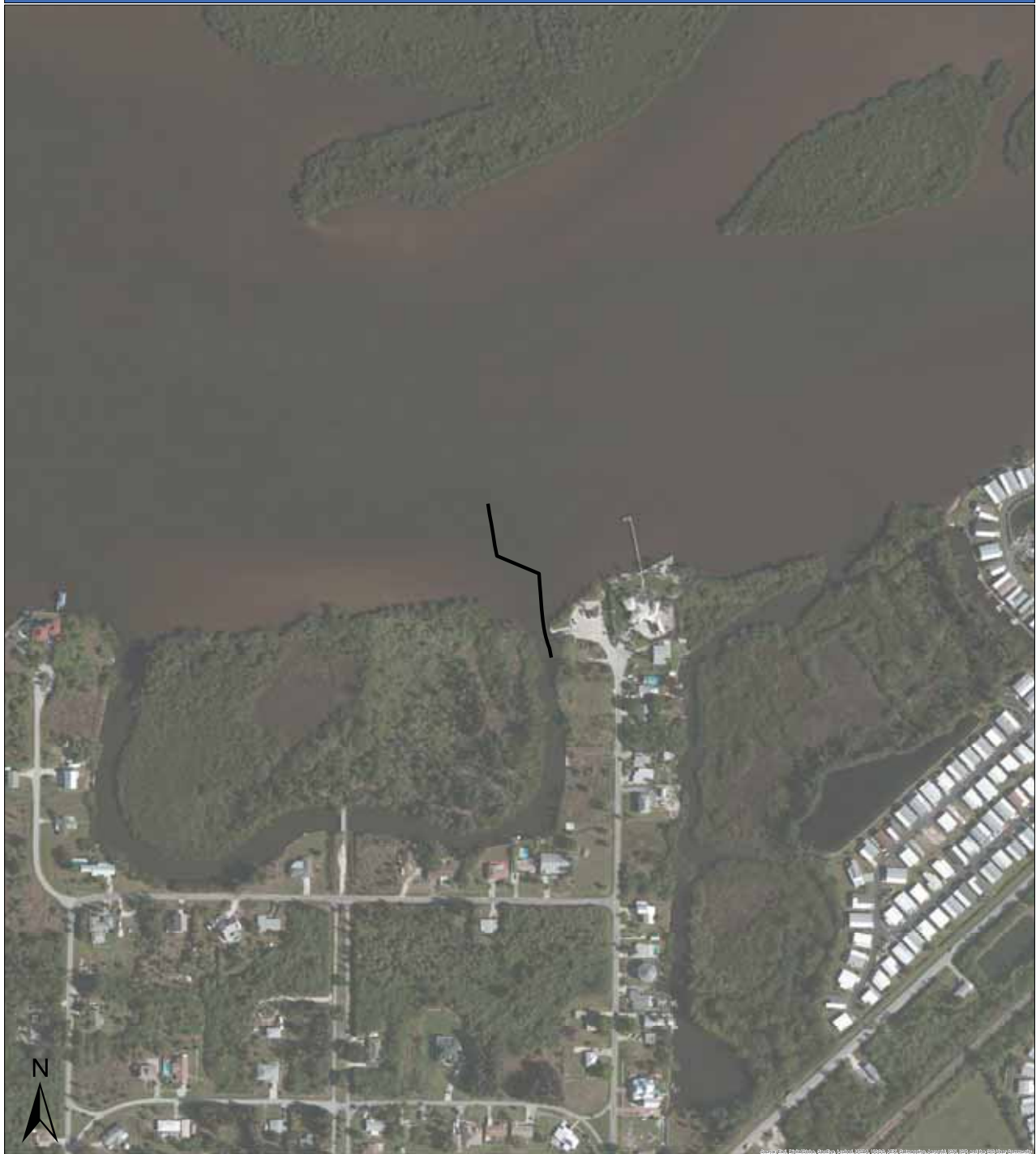
### Channel Restriction Category

- GP Dredging Not Anticipated
- GP Dredging Anticipated

Total GP channel length: 5,059 ft  
Anticipated dredge length: 659 ft  
Design Dredge Depth: 4 ft



# Peace Island-East



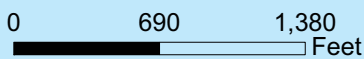
Only those channels belonging to the trafficked or secondary channel system are visible in the map.

### Channel Restriction Category

- GP Dredging Not Anticipated
- GP Dredging Anticipated

Total GP channel length: 537 ft  
Anticipated dredge length: 537 ft  
Design Dredge Depth: 3.5 ft

# Punta Gorda Isles-Tarpon/Pompano Inlet



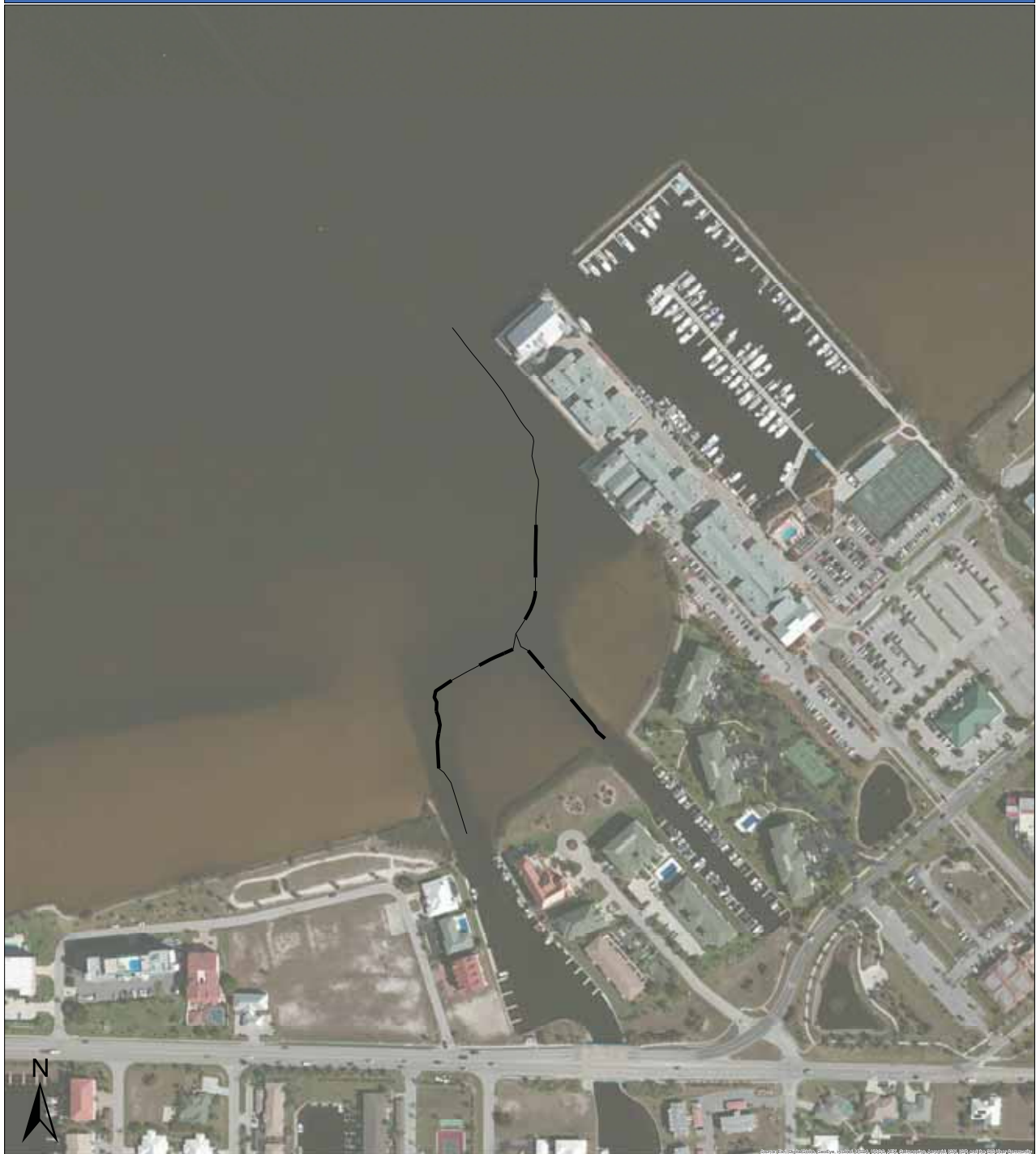
Only those channels belonging to the trafficked or secondary channel system are visible in the map.

### Channel Restriction Category

- GP Dredging Not Anticipated
- GP Dredging Anticipated

Total GP channel length: 6,284 ft  
Anticipated dredge length: 2,388 ft  
Design Dredge Depth: 6.5 ft

# Punta Gorda Isles -- Bass Inlet



Only those channels belonging to the trafficked or secondary channel system are visible in the map.

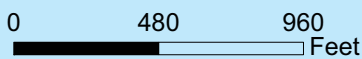
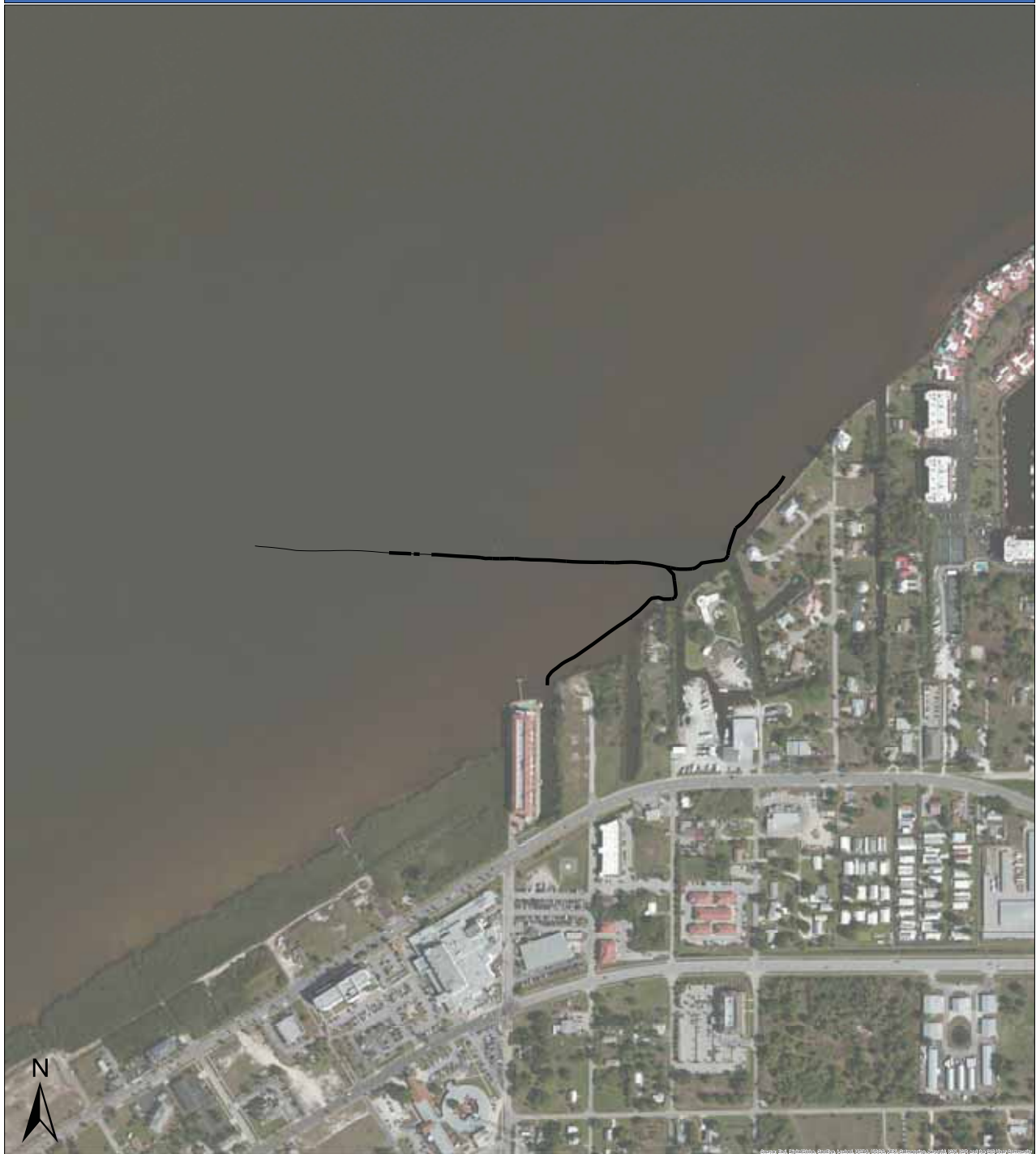
### Channel Restriction Category

- GP Dredging Not Anticipated
- GP Dredging Anticipated

Total GP channel length: 1,713 ft  
 Anticipated dredge length: 689 ft  
 Design Dredge Depth: 4.5 ft



# Punta Gorda Marina



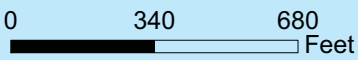
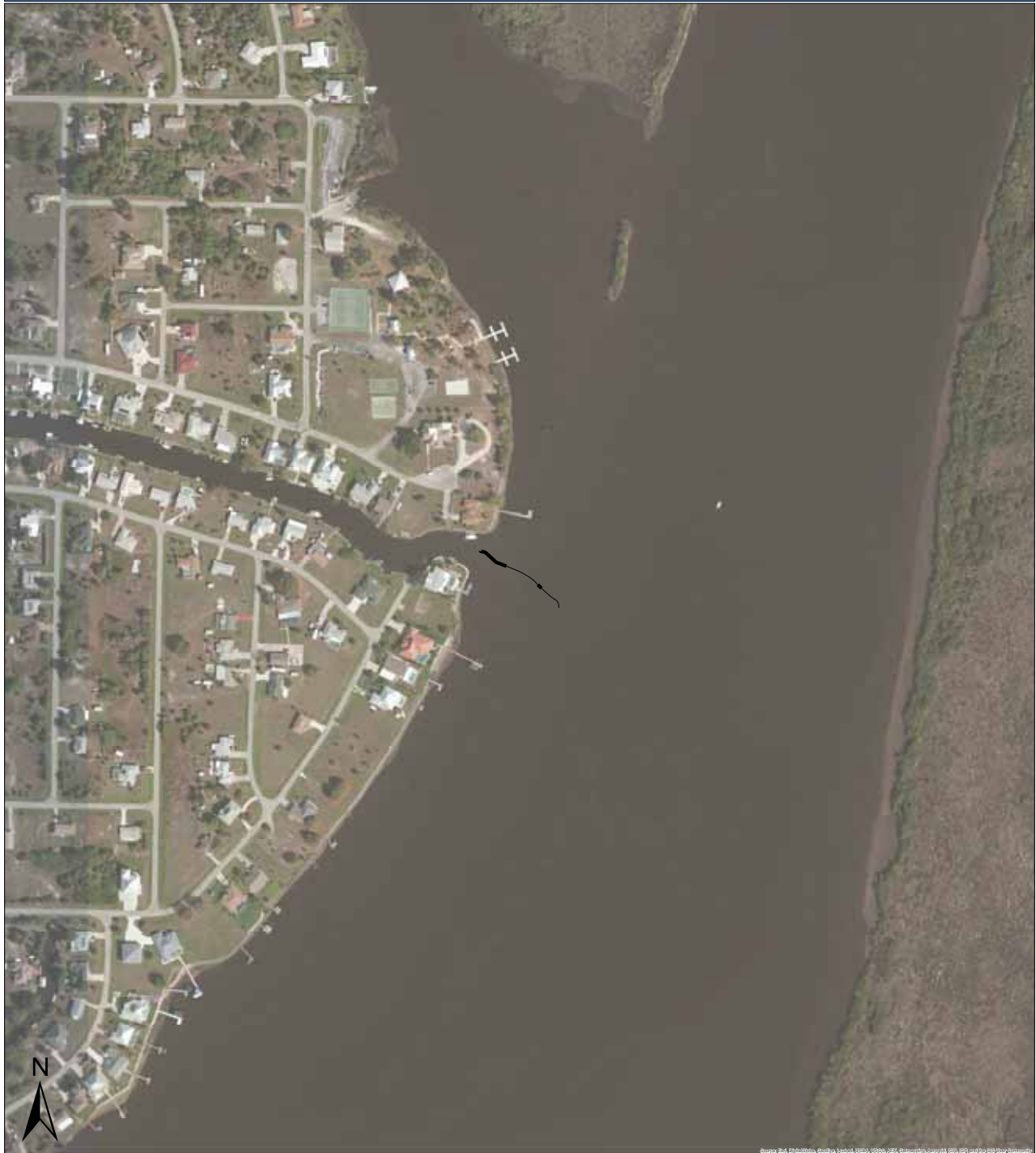
Only those channels belonging to the trafficked or secondary channel system are visible in the map.

### Channel Restriction Category

- GP Dredging Not Anticipated
- GP Dredging Anticipated

Total GP channel length: 3,181 ft  
Anticipated dredge length: 2,573 ft  
Design Dredge Depth: 3.5 ft

# San Marino Canal



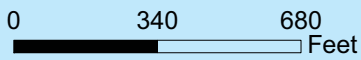
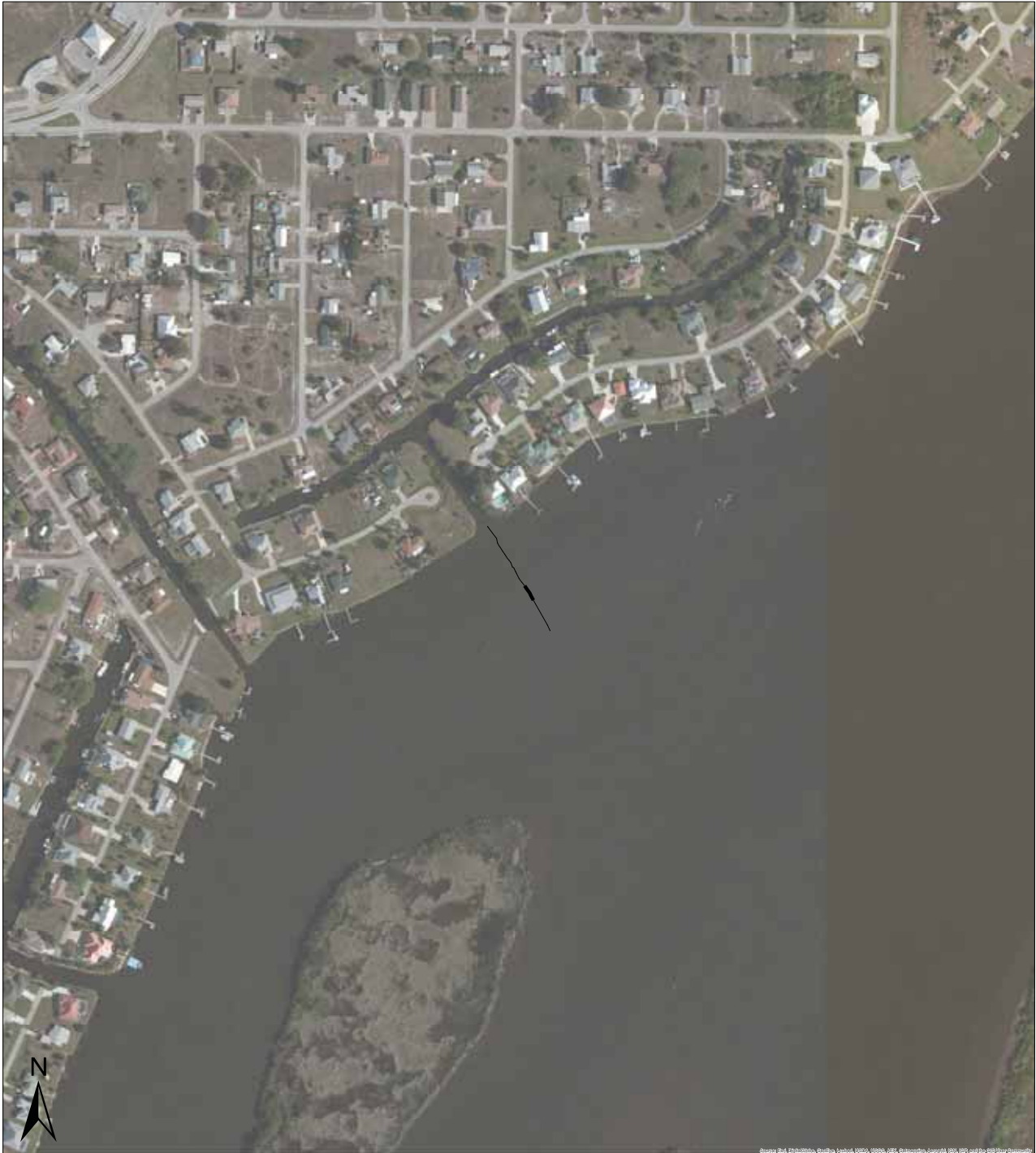
Only those channels belonging to the trafficked or secondary channel system are visible in the map.

### Channel Restriction Category

- GP Dredging Not Anticipated
- GP Dredging Anticipated

Total GP channel length: 291 ft  
Anticipated dredge length: 104 ft  
Design Dredge Depth: 4.5 ft

# San Salvador Canal



Only those channels belonging to the trafficked or secondary channel system are visible in the map.

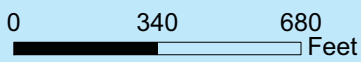
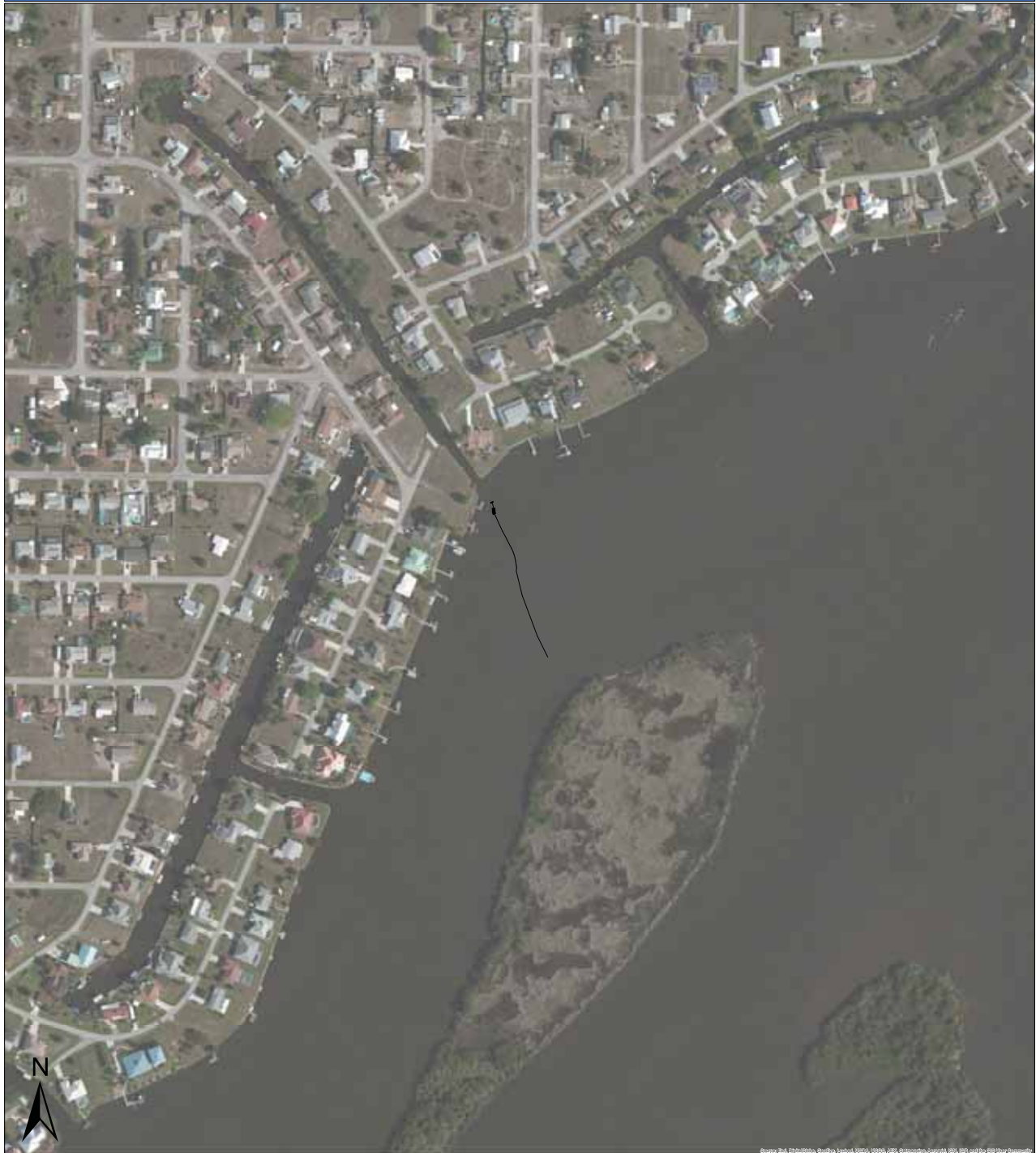
### Channel Restriction Category

- GP Dredging Not Anticipated
- GP Dredging Anticipated

Total GP channel length: 358 ft  
Anticipated dredge length: 49 ft  
Design Dredge Depth: 4.5 ft



# Santa Barbara Canal



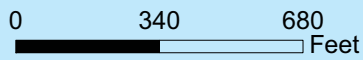
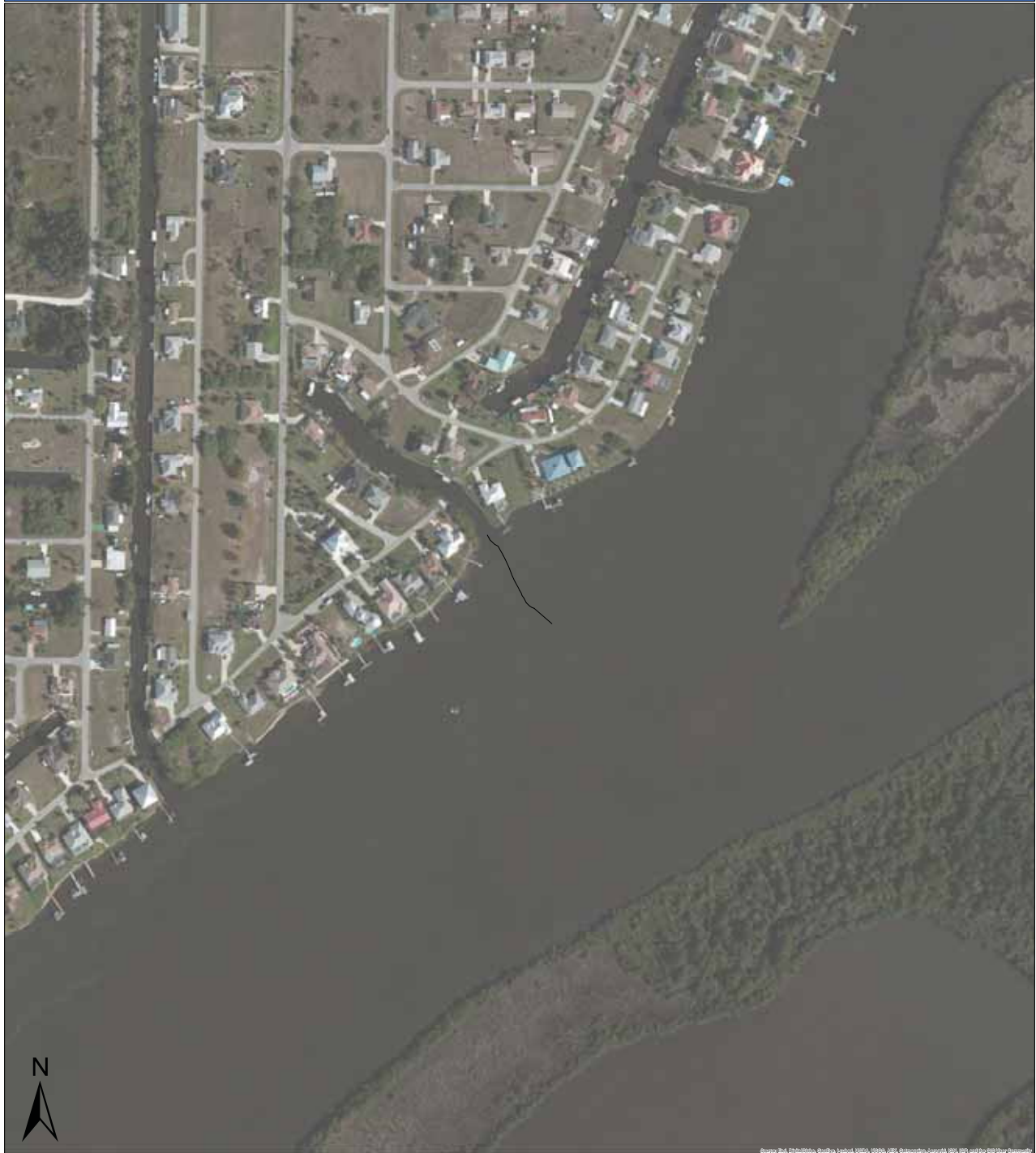
Only those channels belonging to the trafficked or secondary channel system are visible in the map.

### Channel Restriction Category

- GP Dredging Not Anticipated
- GP Dredging Anticipated

Total GP channel length: 486 ft  
Anticipated dredge length: 24 ft  
Design Dredge Depth: 4.5 ft

# Santa Clara Canal



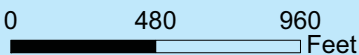
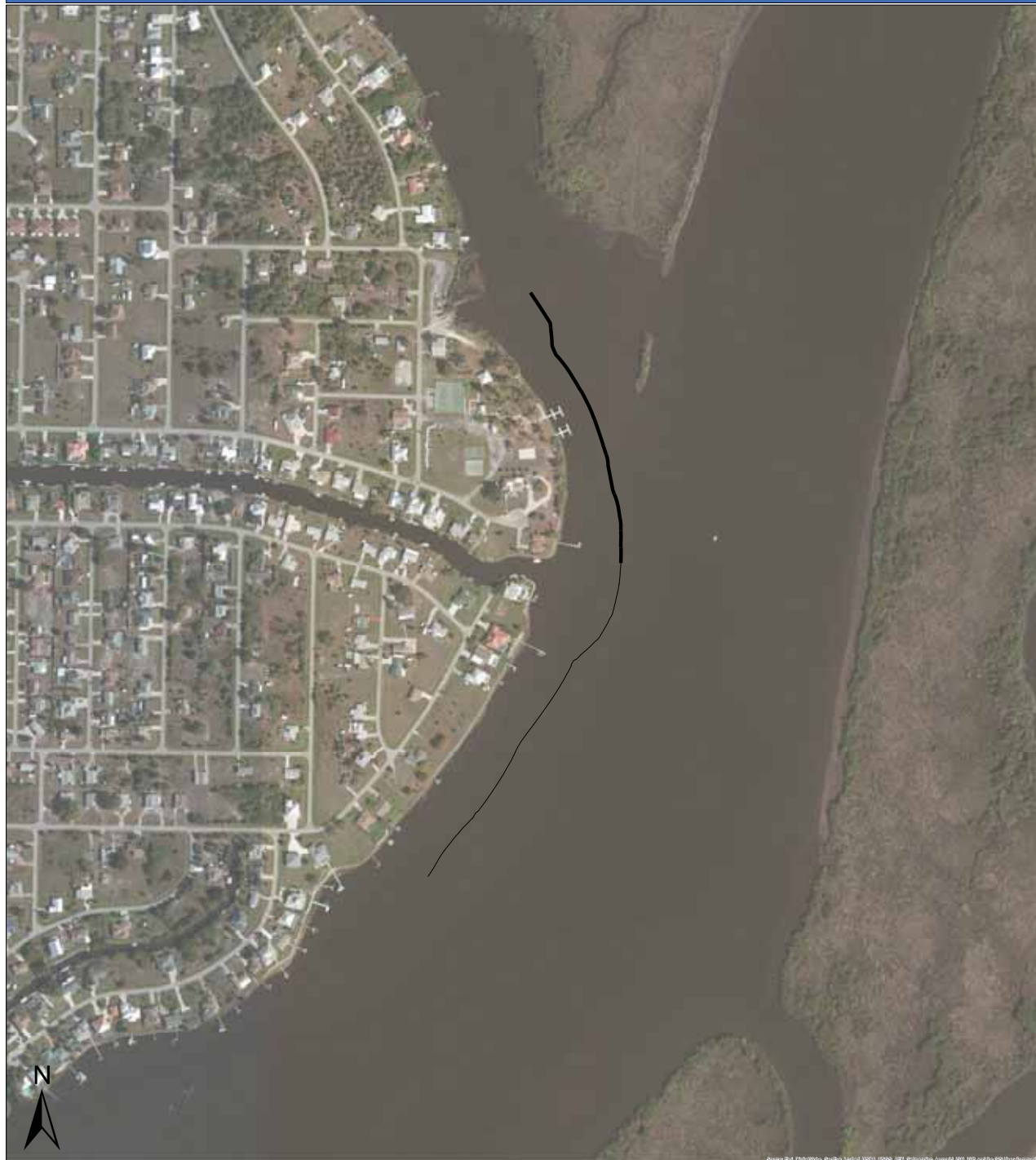
Only those channels belonging to the trafficked or secondary channel system are visible in the map.

### Channel Restriction Category

- GP Dredging Not Anticipated
- GP Dredging Anticipated

Total GP channel length: 328 ft  
Anticipated dredge length: 0 ft  
Design Dredge Depth: 4.5 ft

# Whidden Bay Secondary Channel



Only those channels belonging to the trafficked or secondary channel system are visible in the map.

### Channel Restriction Category

- GP Dredging Not Anticipated
- GP Dredging Anticipated

Total GP channel length: 2,710 ft  
Anticipated dredge length: 1,186 ft  
Design Dredge Depth: 4.5 ft





**Science Serving Florida's Coasts**

Florida Sea Grant is committed to enhancing the practical use and conservation of coastal and marine resources to create a sustainable economy and environment.

Florida Sea Grant College Program  
University of Florida  
Gainesville, Florida 32611  
(352) 392-5870  
[www.flseagrant.org](http://www.flseagrant.org)