

My Pine Is Under Attack—What Should I Do? ¹

Jiri Hulcr²

This guide is intended to help tree owners and Extension personnel make decisions about pine trees that display signs of attack by wood borers. The information presented here pertains only to Florida and the adjacent southeastern region. Other regions may have different pines and different tree pests. The guide pertains mostly to pines grown on a non-industrial scale, such as in private backyards. Large acreages may require more stringent diagnostics. The author takes no responsibility for any financial or other outcomes of decisions users of this guide may make. There are many sources of pine stress other than insects; for complete advice, please contact your county Extension agent or post your question at the Tree Health Diagnostics Forum at the University of Florida website: www.sfrc.ufl.edu/treehealth. All images are by the author unless attributed otherwise.

The Problem

Bark beetles are among the most common causes of pine death in Florida. Their attacks are associated with obvious injuries to pine trunks and with the oozing of resin. Because the injuries are so evident, bark beetle infestations are frequently reported. Landowners often ask for assistance with this issue: “*Something is attacking my pine. What should I spray it with?*” The answer to this question is threefold:

a. First, make sure the tree has actually been attacked by bark beetles. There are many causes for declining pine health. Partial needle loss or color change is common—it may not be caused by bark beetles, and may not even indicate a health problem. If the whole tree is changing

color rapidly, however, and especially if there is sawdust or resin on the tree trunk, you need to act quickly and get a reliable diagnosis. Anytime you are unsure, contact a tree health professional, or our team at www.sfrc.ufl.edu/treehealth.

b. Next, make sure it is not already too late. If you can clearly see that a pine is being attacked by bark beetles, it may as well be already dead. Pine trees are not like oaks. Oaks and many other broadleaf trees can regenerate from even a bad disease or stress, but pines typically cannot. Once on the path to death, there is no recovery for a pine tree. But you can protect the pines around! Even if you can't save this pine, you can determine the cause of death using this document, and see if you can prevent other nearby pine trees from dying.

c. Finally, realize that spraying a dying pine with an insecticide usually doesn't work. You will probably not be able to reverse the course of tree death. Once your pine tree is suffering so much that it appears dying, your best option is to simply remove it. Insecticides or fungicides will not help it recover.

1. This document is FOR331, one of a series of the School of Forest Resources and Conservation, UF/IFAS Extension. Original publication date May 2016. Visit the EDIS website at <http://edis.ifas.ufl.edu>.

2. Jiri Hulcr, professor, School of Forest Resources and Conservation, UF/IFAS Extension, Gainesville, FL 32611.

When do insecticides NOT work on dying pines?

- When the causal agent is hidden inside, inaccessible, or gone. A surface spray won't reach any of the insects inside.
- When the tree is too sick. Sometimes, even if you inject the chemical into the tree, it won't get to the impacted tissue because the vascular system is already failing.
- When insecticides make the problem worse. You may be doing more damage than good: by spraying the surface, you are killing the predators and parasites of bark beetles. Those natural enemies of the pest are your friends!

When DO insecticides work on pines?

- Prophylactically, on high-value pines that are healthy and alive. Some wood borers, such as the black turpentine beetle, may colonize living pines, and may be controlled by spraying.

- The attacked pine is rather solitary, there are not many other pines nearby, or all the other pines are less than 10 years old → **removal not necessary.**
- There are other mature pines just next to the attacked tree. It is fall or winter: the beetles are unlikely to emerge → **removal not necessary**, though recommended later.



- There are other mature pines just next to the attacked tree. It is spring or summer, so the beetles will be able to emerge → **remove the attacked tree soon.**

1. Is Your Pine Attacked By Bark Beetles? Look Closely At The Bark

- The pine seems to be declining, but the bark has no beetle symptoms (no dust, no holes). When you peel off a tiny piece, the tissue is yellow and wet (healthy) → **Not bark beetles.**
- The bark has occasional holes, but no resin flow. The holes do not penetrate the tissue under the bark; that wood is yellow and wet (healthy) → **Bark boring insects, no concern.**
- The bark is producing dry, brown or white sawdust, also known as frass. There are tunnels under the bark: **Non-epidemic bark beetles.** Your pine is definitely dying; however there is low likelihood of these beetles spreading to the neighboring pines. To see whether you need to take further action, → **go to 2.**
- Resin is coming out of the bark on many places. This resin can have different colors or shapes. There are tunnels under the bark you may have bark beetles. → **go to 3.**

2. The Presence Of Non-Epidemic Bark Beetles Means That Your Pine Is Dying

Non-epidemic bark beetles attack pines that are stressed. These are mostly the *Ips* pine engravers, the black turpentine beetle, or one of a few other species of wood borers. Non-epidemic bark beetles do not usually spread to neighboring pines, and no further action is typically needed, unless those neighboring pines are also stressed. However, the beetles may multiply quite a lot, and sometimes you may want to protect the neighboring trees if they are a little stressed. Here we will determine whether you should remove the attacked tree:

3. You May Have “Epidemic” Bark Beetles

- Epidemic bark beetle species are capable of multiplying fast and killing adjacent pines. The only truly epidemic species in Florida is the southern pine beetle. But it is actually rare, and similar symptoms may be caused by the black turpentine beetle and the *Ips* beetle, both of which are more common and less dangerous than the southern pine beetle. → **See the next section, “Distinguishing Dangerous Bark Beetles.”**

Distinguishing Dangerous Bark Beetles

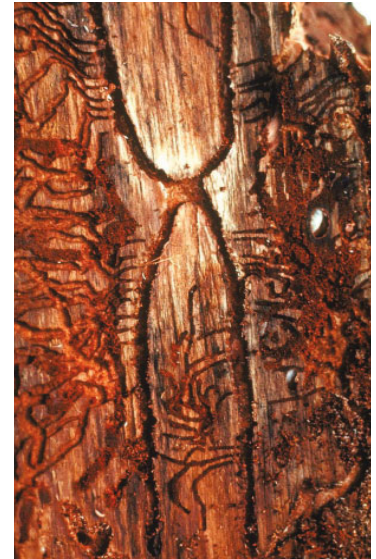
The Black Turpentine Beetle

The resin flows only from spots at the base of the tree (rarely above 8 ft). The flow is conspicuous (>1 in). This is the black turpentine beetle, a species that is rarely epidemic: → **removal recommended, but not urgent**. Monitoring of surrounding trees is critical. This is the one case when an insecticidal spray may help.



The Ips Beetle

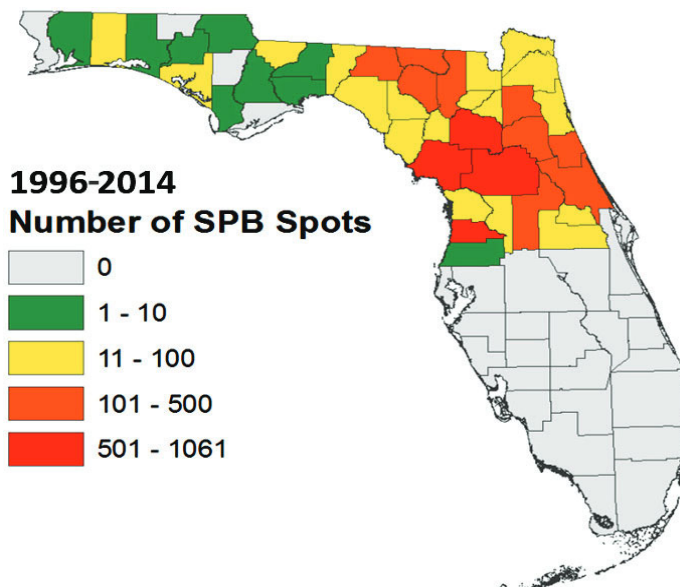
Resin flows from many sources **all along the trunk**. Peel off the bark (use a hatchet). If you see two types of tunnels—larger straight vertical ones and many smaller curved ones, they were made by the non-epidemic *Ips* beetles that happened to attack a still living but certainly stressed pine. *Ips* beetles rarely mount an outbreak, and never in a healthy, thinned stand → **removal usually not necessary**, but also go back to “The Presence of non-epidemic bark beetles means that your pine is dying.”



Credits: William M. Ciesla

The Southern Pine Beetle (SPB)

Resin emerges from many sources **all along the trunk**, dozens or hundreds. It appears less like a flow of resin and more like popcorn-like white balls of resin. Importantly, most of the resin balls are in the crevices between bark flakes, not on top of the flakes. Peel off the bark: with SPB, all the tunnels will be curved and winding. This is the only pine bark beetle in the Southeast that can cause an epidemic. If you discover these symptoms, and if you live north of Orlando, → **remove the tree immediately**. Depending on the stage of the colonization, you may also need to **remove the neighboring trees**. Please refer to <https://edis.ifas.ufl.edu/in333>, the UF/IFAS publication about the southern pine beetle, for more guidance.



The southern pine beetle does not occur south of Orlando.

Credits: J. Eickwort, Florida Forest Service

