

# Síntomas de Cancro Cítrico en Árboles de Vivero



PP307

Timothy D. Riley, Megan M. Dewdney, and Jamie D. Burrow<sup>2</sup>



Cancro < 1 mes (inferior)  
(naranja dulce Hamlin)



Cancro < 1 mes (inferior)  
(naranja dulce Hamlin)



Cancro < 1 mes (superior)  
(naranja dulce Hamlin)



Cancro < 1 mes (inferior)  
(citrumelo *Swingle*)



Cancro < 1 mes (inferior)  
(citrumelo *Swingle*)



Cancro < 1 mes (superior)  
(citrumelo *Swingle*)

1. This document is PP307, one of a series of the Plant Pathology Department, Florida Cooperative Extension Service, Institute of Food and Agricultural Sciences, University of Florida. Original publication date May 2013. Visit the EDIS website at <http://edis.ifas.ufl.edu>.
2. Timothy D. Riley, plant pathologist, Citrus Health Response Program, USDA APHIS PPQ; Megan M. Dewdney, assistant professor, Department of Plant Pathology, Citrus REC, Lake Alfred, Florida; and Jamie D. Burrow, coordinator, Canker, HLB and Exotic Diseases Extension Education, Citrus REC, Lake Alfred, Florida; Cooperative Extension Service, Institute of Food and Agricultural Sciences; University of Florida; Gainesville, FL 32611.
3. Photo credits: USDA, FDACS-DPI; Dan Robl, USDA APHIS PPQ; and Tim Schubert, FDACS -DPI.
4. The Citrus Health Response Program is a collaborative effort involving growers, federal and state regulatory personnel, and researchers. Its goal is to sustain the U.S. citrus industry, maintain growers' continued access to export markets, and safeguard citrus-growing states against a variety of citrus diseases and pests.

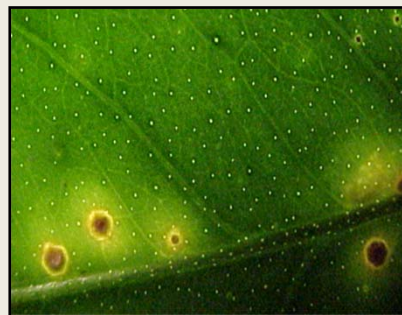




Cancro < 1 mes (superior)



Cancro < 1 mes (inferior)



Cancro < 1 mes (superior)



Cancro < 1 mes (inferior)



Cancro < 1 mes (inferior)



Cancro < 1 mes (inferior)



Cancro < 1 mes (inferior)



Cancro < 1 mes (inferior)



Cancro < 1 mes (superior)



Cancro < 1 mes (inferior)



Cancro < 1 mes (inferior)



Cancro < 1 mes (inferior)



Múltiples lesiones en tejido dañado



En galerías del minador de la hoja (superior)



Cancro < 1 mes (inferior)



Cancro < 1 mes (inferior)