

Packinghouse Citrus Black Spot ID¹

Identificación de la Mancha Negra de los Cítricos en las Plantas de Procesamiento

HS1184

M. Ritenour, M. M. Dewdney, N. A. Peres, and J. D. Yates²

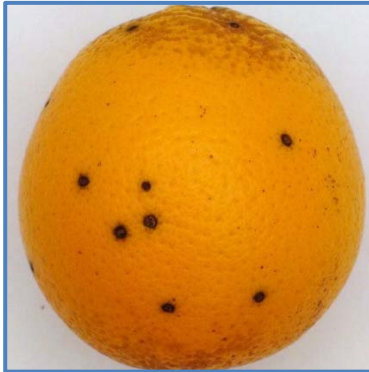
Citrus black spot symptoms have many forms, such as hard spot, cracked spot, false melanose, and virulent spot.

La mancha negra de los cítricos presenta muchos tipos de síntomas tales como, manchas o puntos duros, manchas o puntos agrietados, manchas o puntos de falsa melanosis y manchas o puntos virulentos.



Hard Spot

Manchas o puntos duros



Hard Spot

Manchas o puntos duros



Hard Spot

Manchas o puntos duros



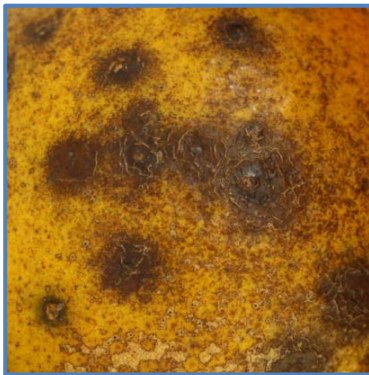
Hard Spot

Manchas o puntos duros



Hard Spot

Manchas o puntos duros



Cracked Spot

Manchas o puntos agrietados



False Melanose

Falsa Melanosis



Virulent Spot

Mancha Virulenta



**Early Virulent Spot
(freckle spot)**

Mancha virulenta temprana (mancha peca)



**Early Virulent Spot
(freckle spot)**

Mancha virulenta temprana (mancha peca)



**Early Virulent Spot
(freckle spot)**

Mancha virulenta temprana (mancha peca)



**Early Virulent Spot
(freckle spot)**

Mancha virulenta temprana (mancha peca)

1. This document is HS1184, one of a series of the Horticultural Sciences Department, Florida Cooperative Extension Service, Institute of Food and Agricultural Sciences, University of Florida. Original publication date August 2010. Visit the EDIS Web Site at <http://edis.ifas.ufl.edu>.

2. Mark Ritenour, associate professor, Department of Horticultural Science, Indian River REC, Ft. Pierce, Florida; Megan M. Dewdney, assistant professor, Department of Plant Pathology, Citrus REC, Lake Alfred, Florida; Natalia A. Peres, assistant professor, Department of Plant Pathology, Gulf Coast REC, Balm, Florida; and Jamie Yates, coordinator, Canker, HLB and Exotic Diseases Extension Education, Citrus REC, Lake Alfred Florida; Cooperative Extension Service, Institute of Food and Agricultural Sciences; University of Florida; Gainesville, FL 32611.