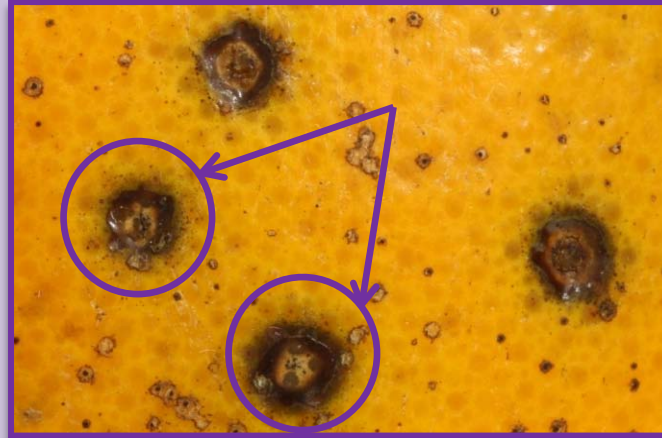


# Citrus Black Spot

M. M. Dewdney and N. A. Peres



Hard spot symptoms on  
'Valencia'



Fungal structures (pycnidia) found in  
hard spot lesions



Severe hard spot symptoms  
on 'Valencia'

**Fungal disease:** Caused by *Guignardia citricarpa* (sexual stage) / *Phyllosticta citricarpa* (asexual stage)

**Major inoculum source:** Airborne ascospores (sexual spores) from leaf litter

**Minor inoculum source:** Conidia (asexual spores) from pycnidia that form on fruit, dead twigs, and leaf litter. The conidia are rain-splash dispersed. Potential problem on cultivars that have young and mature fruit on the tree simultaneously.

**Cultivar susceptibility:** All commercial cultivars are susceptible, but late maturing cultivars and lemons are most vulnerable.

**Leaf symptoms:** Rare in well-managed groves; most common on lemons. Older lesions are small, round, and sunken with a gray center, dark brown margin, and yellow halo. Younger lesions are reddish brown with light centers and a diffuse yellow halo.

**Fruit symptoms:** Variable. Four main types: **1) Hard spot** (most common and diagnostic) – Small, round, sunken lesions with gray centers with brick red to black margins. Fungal structures appear as slightly elevated black dots. Appears as fruit begins to color where light exposure is highest; **2) False melanose** – Numerous small, slightly raised lesions that can be tan to brown. Occurs on green fruit and does not have pycnidia. May become hard spot later in the season; **3) Cracked spot** – Large, flat, dark brown lesions with raised cracks in their surface. Thought to be caused by an interaction with rust mite. Can become hard spot later in the season. Occurs on green and mature fruit;  
**continued other side**

1. This document is PP274, one of a series of the Plant Pathology Department, Florida Cooperative Extension Service, Institute of Food and Agricultural Sciences, University of Florida. Original publication date May 2010. Visit the EDIS website at <http://edis.ifas.ufl.edu>.

2. Megan M. Dewdney, assistant professor, Department of Plant Pathology, Citrus REC, Lake Alfred Florida; Natalia A. Peres, assistant professor, Department of Plant Pathology, Gulf Coast REC, Wimauma Florida, Cooperative Extension Service, Institute of Food and Agricultural Sciences; University of Florida; Gainesville, FL 32611.

# Other Black Spot Symptoms



Cracked spot symptoms on 'Valencia'



Close view of cracked spot with hard spots forming



Small lesions that will likely develop into hard spot



Young lesions on 'Valencia' leaves



False melanose



Early virulent (circled) and hard spot lesions with a close-up of virulent spots



Leaf symptoms on 'Valencia'

**4) Early virulent spot (freckle spot)** – Small, reddish, irregularly shaped lesions. Occurs on mature fruit as well as postharvest in storage. Can develop into either virulent spot or hard spot. Virulent spot is caused by the expansion and/or fusion of other lesions covering most of the fruit surface toward the end of the season.

**Severely affected fruit can drop before harvest, causing significant yield loss.**

*The Institute of Food and Agricultural Sciences (IFAS) is an Equal Opportunity Institution authorized to provide research, educational information and other services only to individuals and institutions that function with non-discrimination with respect to race, creed, color, religion, age, disability, sex, sexual orientation, marital status, national origin, political opinions or affiliations. For more information on obtaining other extension publications, contact your county Cooperative Extension service. U.S. Department of Agriculture, Cooperative Extension Service, University of Florida, IFAS, Florida A. & M. University Cooperative Extension Program, and Boards of County Commissioners Cooperating. Millie Ferrer-Chancy, Interim Dean.*