

CANKER MANAGEMENT

Decontamination
Tree removal
Defoliation
Windbreaks
Copper sprays
Leafminer control



RESOURCES

- Citrus Research and Education Center
Website www.crec.ifas.ufl.edu
- Canker Symptoms versus Common Citrus Diseases Laminated Sheet
- Packinghouse Citrus Canker Fruit ID Laminated Sheet
- Canker Flow Chart and Symptoms Laminated Sheet
- Canker Training DVD
- Canker Field Identification Pocket Guide
- 2008 Florida Citrus Pest Management Guide

CONTACTS

Citrus Research and Education Center

Jamie Yates
Canker and Greening Extension Education
863-956-1151 ext. 1302

Jim Graham, Ph.D.
Soil Microbiologist
863-956-1151 ext. 1297

Megan Dewdney, Ph.D.
Plant Pathologist
863-956-1151 ext. 1267

Lukasz Stelinski, Ph.D.
Entomologist
863-956-1151 ext. 1281

Tim Spann, Ph.D.
Horticulturist
863-956-1151 ext. 1417

Citrus Extension Agents

Ryan Atwood Marion, Lake, Volusia, Orange, Seminole, Brevard and Osceola counties 352-343-4101	Tim Hurner Highlands County 863-402-6540
Gary England Citrus, Hernando, Sumter and Pasco counties 352-793-2728	Chris Oswalt Polk and Hillsborough counties 863-519-8677
Steve Futch, Ph.D. DeSoto, Hardee, Manatee and Sarasota counties 863-956-1151	Mongi Zekri, Ph.D Hendry, Glades, Lee, Charlotte and Collier counties 863-674-4092
Tim Gaver St. Lucie, Martin, Okeechobee and Indian River counties 772-462-1660	

CITRUS CANKER



An established infection in
the Florida Citrus Industry

UF UNIVERSITY of
FLORIDA
IFAS Extension

July 2008

CANKER HISTORY

1910

First introduction into Florida

1933

First introduction of canker eradicated

1986

Second introduction into Florida

Second introduction of canker eradicated

1995

Third introduction into Florida

2000

Statewide mandatory eradication 1,900-foot rule implemented

Quarantine areas were established when canker was detected

Mandatory statewide decontamination procedures became required

2002

Removal of infected and exposed trees were delayed due to lawsuits

2004-2005

Hurricanes increased the spread of canker across the state

2005

First nursery infected with canker was found

2006

Mandatory eradication ended

2007

More than 20 Florida counties infected with canker

Removal of infected trees is now voluntary

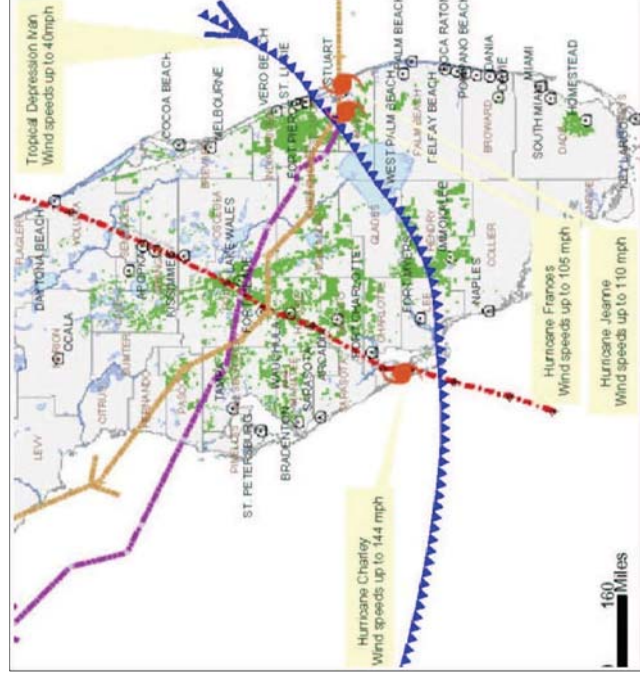
Decontamination procedures are required statewide to prevent the spread of citrus canker



CANKER SPREAD

- Wind-driven rain
- Storm events
- Flooding
- Citrus leafminer
- Birds and other animals
- Overhead irrigation
- Human movement of infected plant material
- Human and equipment movement within groves
- Canker does *not* harm humans

CITRUS CANKER IS HIGHLY CONTAGIOUS!

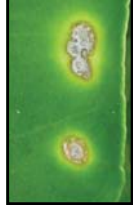


Hurricanes that crossed the state of Florida in 2004 and 2005 increased the spread of canker statewide

CANKER SYMPTOMS

LEAF SYMPTOMS

- Early symptoms appear as slightly raised, tiny blister-like lesions



- As lesions age, they turn tan to brown, and a water-soaked margin appears surrounded by a yellow ring or halo

Center of the lesion becomes raised and corky

- Lesions are usually visible on both sides of a leaf



FRUIT AND STEM SYMPTOMS

- Dark brown or black raised, corky lesions surrounded by an oily or water-soaked margin
- Mature lesions appear scabby or corky



For more information, please contact the University of Florida, IFAS, Citrus Research and Education Center, Lake Alfred 863-956-1151