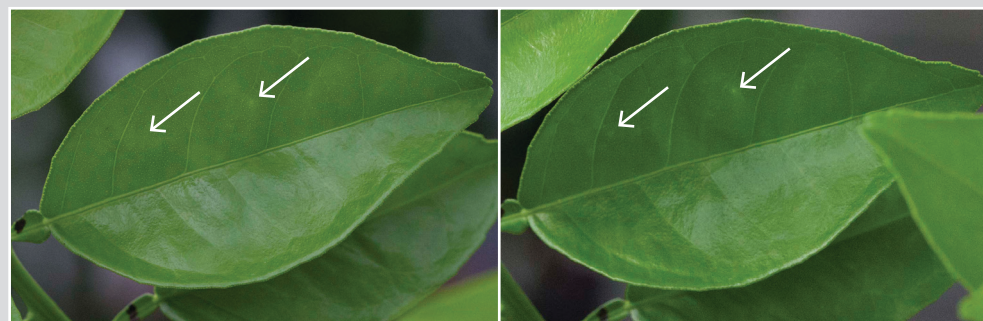


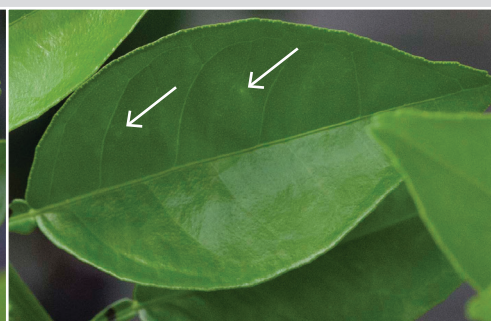
Formation of Citrus Canker Lesions¹

Jamie D. Burrow, Megan M. Dewdney,
Aija M. Paolillo, and Timothy D. Riley²

Citrus canker is a non-systemic bacterial disease that affects citrus trees in both the citrus nursery and in commercial plantings. Canker is easily spread from plant to plant. Early symptom detection will reduce plant-to-plant spread and minimize lesion development, resulting in fewer losses to citrus nursery stock. Maintaining disease-free plant materials is critical in supporting optimal production standards. For more information on citrus canker management, please visit the *Florida Citrus Production Guide: Citrus Canker* at <https://edis.ifas.ufl.edu/pdffiles/CG/CG04000.pdf>



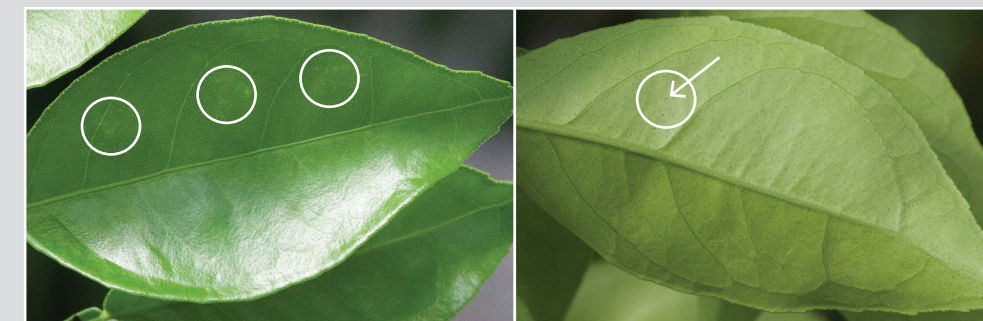
1 week after inoculation



10 days after inoculation



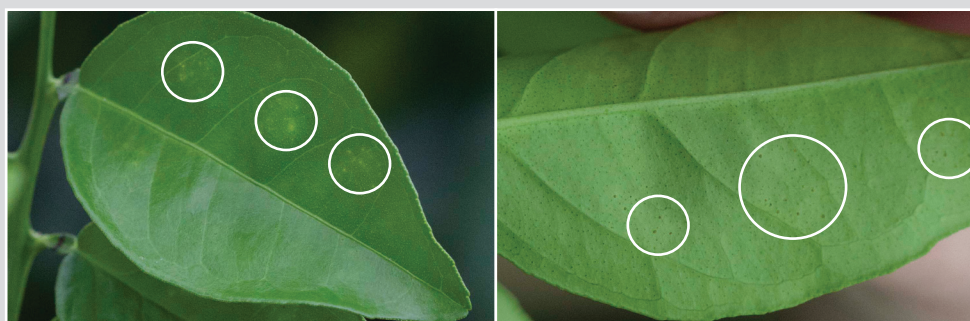
11 days after inoculation



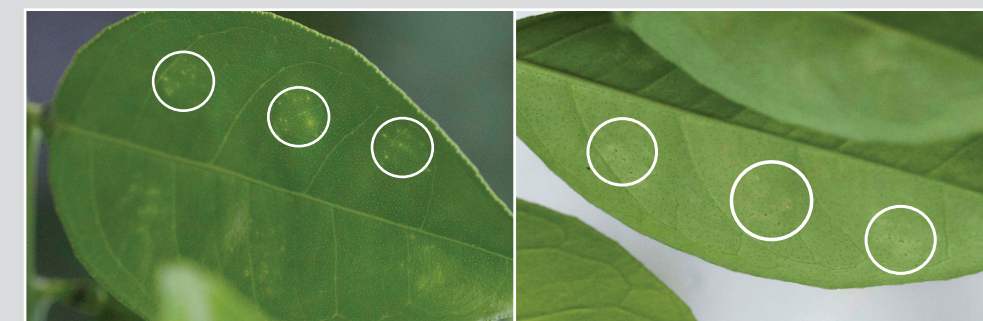
12 days after inoculation



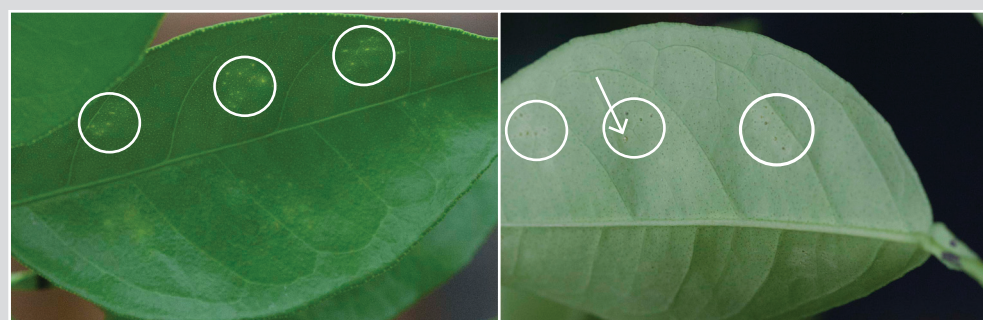
13 days after inoculation



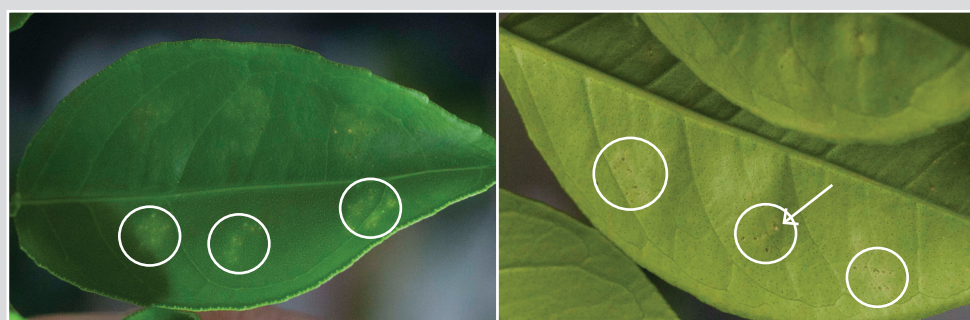
14 days after inoculation



15 days after inoculation



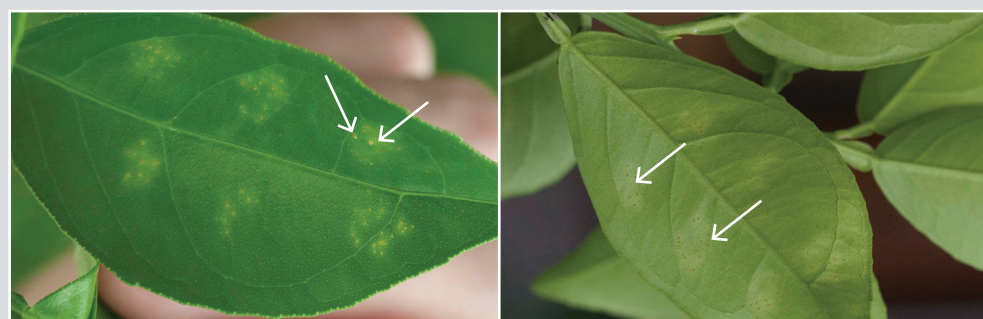
16 days after inoculation



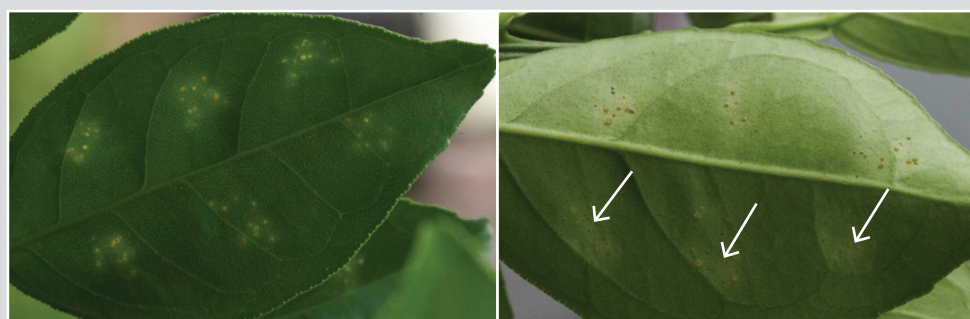
17 days after inoculation



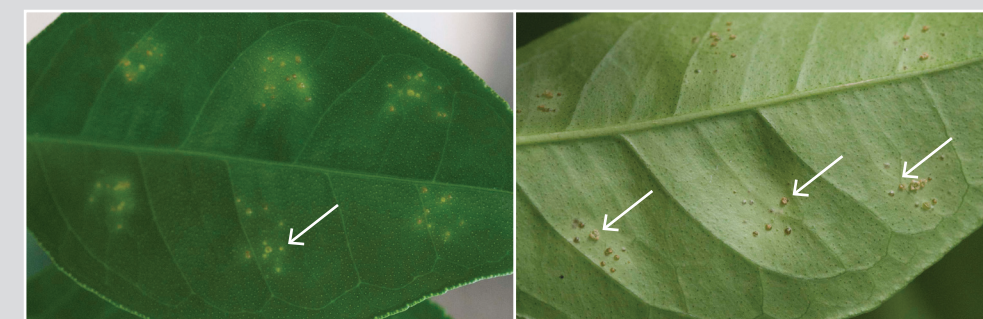
18 days after inoculation



19 days after inoculation



21 days after inoculation



22 days after inoculation

1. This document is PP346, one of a series of the Plant Pathology Department, UF/IFAS Extension. Original publication date March 2019. Visit the EDIS website at <https://edis.ifas.ufl.edu> for the currently supported version of this publication.

2. Jamie D. Burrow, Extension program manager; Megan M. Dewdney, associate professor, Department of Plant Pathology; Citrus Research and Education Center; Aija M. Paolillo, environmental specialist II, Division of Plant Industry, FDACS; and Timothy D. Riley, plant pathologist, Citrus Health Response Program, USDA APHIS PPQ; UF/IFAS Extension, Gainesville, FL 32611.

The Institute of Food and Agricultural Sciences (IFAS) is an Equal Opportunity Institution authorized to provide research, educational information and other services only to individuals and institutions that function with non-discrimination with respect to race, creed, color, religion, age, disability, sex, sexual orientation, marital status, national origin, political opinions or affiliations. For more information on obtaining other UF/IFAS Extension publications, contact your county's UF/IFAS Extension office.

U.S. Department of Agriculture, UF/IFAS Extension Service, University of Florida, IFAS, Florida A & M University Cooperative Extension Program, and Boards of County Commissioners Cooperating. Nick T. Place, dean for UF/IFAS Extension.