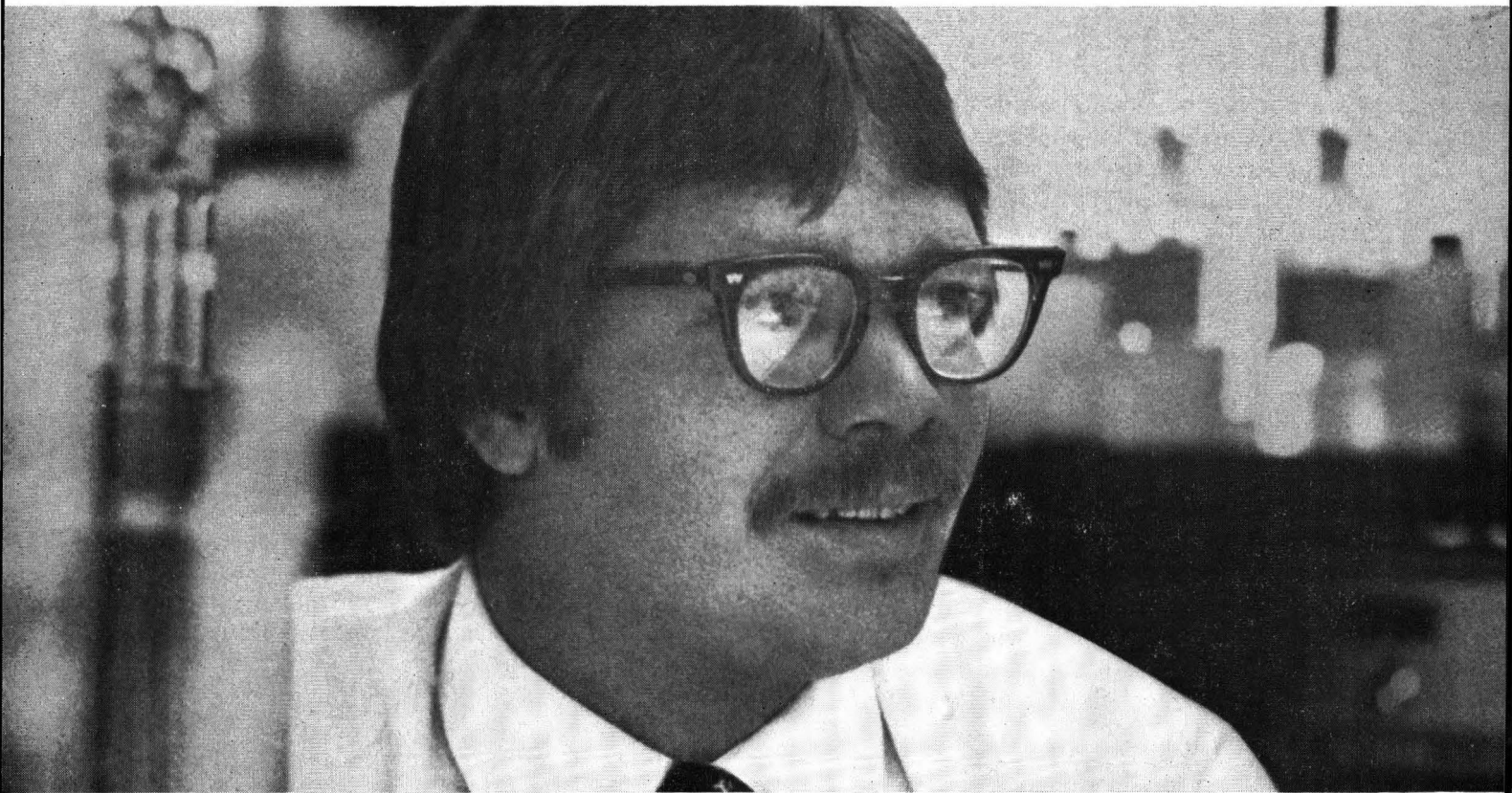


"At DuPont you don't get lost in a big company atmosphere. It's very personal."

—George D. Peterson BS, Chemical Engineering



"Du Pont is a big company but it's broken down into satellites. So you don't get lost in a big-company atmosphere. It's very personal, and I think the people are top-notch.

"I started in technical here at the Belle Plant in West Virginia. Now I'm a production supervisor. Production is solving problems on a day-to-day basis. I like working under that kind of pressure. When things

work out, it's very rewarding. So is working with people. I'm responsible for helping 22 people do their jobs."

George was recruited by Du Pont from the Michigan Technological University campus in 1973. He interviewed about 25 companies.

George's story is typical of many Chemical, Mechanical and Electrical Engineers who've chosen careers at Du Pont.

We place no limits on the progress our engineers can make. And we place no limits on the contribution they can make—to themselves, the Company or to society.

If this sounds like your kind of company, do what George Peterson did. Talk to the Du Pont representative who visits your campus. Or write: Du Pont Company, Room 35972, Wilmington, DE 19898.

At Du Pont...there's a world of things YOU can do something about.



REG. U.S. PAT. & TM. OFF.

An Equal Opportunity Employer, M/F